



The Ibex Ski And Snowboard Club

THE OLD GOAT

Meetings: 1st & 3rd Wednesdays of every month

Gatsby's Sports Pub

427 East Rand Road - Arlington Heights, (847) 253-7200

November 2009

Vail	1
Trip Connections	2
Keystone	3
Mt Bachelor	4
Ed's Philoso-Fee	5
Activity Update	6
Broken Oar Recap	7
Cascade Drive-up Trip	8
Bar of the Month	8
Telluride	9
Fall Colors Golf Recap	10
Chile	12
Membership Form	15
Refrigerator Calendar	16

Special points of interest:

- BOM - Mill Rose Inn— Annual Pre-Holiday Evening
- The Adams Family - See the show before it moves to Broadway
- Cascade Drive-up Ski Trip
- MEMBERSHIP RENEWAL TIME—Sign up early, sign up often! After all this is Chicago. We now have over 108 members signed up.

VERITABLY VAIL!

January 16 – January 23, 2010



Are you ready to ski an awesome destination & party with your fellow Ibex, the folks from Louisville Ski Club and maybe even some new friends from Vail Resort? As of this writing 27 spots already sold so only one more opening! After this spot is sold, I will take a waiting list and will do our best to get you on the trip – we will try to add spots in groups of 2 based upon availability. So if you are still thinking about signing up for Vail, contact me as soon as possible –

the longer you delay, the worse the odds are for adding additional spots.

I thought I'd share some information that was published in the October 2009 issue of *Ski Magazine* to whet your appetite for our upcoming adventure. "Vail. 'The gold standard for ski resorts. Vail has everything for everyone.'" *Ski Magazine's* readers voted Vail the number 3 ski operation in the land. Here's some individual statistics that roll up to the magic number 3 spot - # 3 Grooming, #4 Après, # 6 Lifts and Dining, #7 Snow, # 8 Lodging. Probably better than any resort on the continent, Vail has delivered on its mission to be

(Continued on page 11)

COMPRESSION REDUCER X



Your ski-movie heroes might be fearless, but they aren't stupid. So don't think for a second that they aren't padding up underneath that cool outerwear before they go huge in the pipe or charge that steep, rock-studded line in Alaska. In the past, lots of pro athletes have adapted padded motocross apparel to their uses. Now companies like Scott USA (which happens to have a motocross line, too) are offering ski-specific body armor.

Speed event racers have been wearing spine protectors like The Compression Reducer X for a while, and there's no reason the average skier

(Continued on page 8)

IBEX TRIP CONNECTIONS



New Years – Keystone, CO

Sold Out!



Spring Break – Telluride, CO

Price: \$1259.00
Trip Leader: Mike Psaras
Trip Dates: 3/20/2010 to 3/27/2010
Spots: 40

VAIL Like nothing on earth.

Jan. Weeklong Trip – Vail, CO

Price: \$1198.00
Trip Leader: Pam Arnold
Trip Dates: 1/16/2010 to 1/23/2010
Spots: 28 - One spot available



Chile, South America

Price: \$2675.00
Trip Leader: Glen Chiechi
Dates: 9/10/2010 to 9/20/2010
Spots: 24

Optional Extension to Buenos Aires

Price: \$529.00 Land TBD Air
Dates: 9/20/2010 to 9/24/2010
Spots: 24



Feb. Long Weekend - Mt. Bachelor

Price: \$1085.00
Trip Leader: Patrice Conaway
Trip Dates: 2/24/2010 to 3/1/2010
Spots: 20

If you have any questions or need additional information on our 2009-10 ski vacation trips, please contact Pam or Patty at the E-Mail address listed below. Complete trip brochures are also available at the Ibox Web site, www.skiibex.com

Pam Arnold Chiechi
Trip Chair
847-915-2887

Patty Blades
Trip Assistant

E-Mail

ibextrips2009@skiibex.com

KEYSTONE - NEW YEARS TRIP

December 30 - January 3

New Years Eve in Keystone, who could ask for more? Not only is a ton of fun guaranteed on this trip – but so is the chance that spots will go fast. So sign up for this trip as soon as you can!



We depart on Wednesday, December 30 at 6:30 PM on United Airlines from O'Hare to Denver. Since Friday is New Year's Day (and assuming that you workplace includes this as a holiday) you may have to take only one day off from work or none at all! We will return on Sunday, January 3, leaving the resort at 3:30 PM arriving in Chicago around 10:20 PM. This will give you four full days of skiing.

For only \$1,219 you will receive the round trip airfare on United, a direct flight from O'Hare to Denver and back plus ground transportation to and from the Denver airport. Four nights lodging at the Keystone Lodge, which is typical hotel lodging: two per room with either one king or two queen beds. Also included, is a welcome wine and cheese party, three days of lift tickets at Keystone (which is part of Vail resorts and can also be used at nearby A-Basin and Breckenridge) and one day lift ticket and transportation to ski at Copper Mountain (my personal favourite ski area in the world!).

Per our esteemed Trip Chair, Pam Arnold, the Keystone Lodge is in a great location, close to the mountain. It has restaurants and bars, a full spa, hot tubs (plural), swimming pool, and free shuttle buses.

Additional activities will be a New Year's celebration and the usual pub crawl. Details on those will be forthcoming.

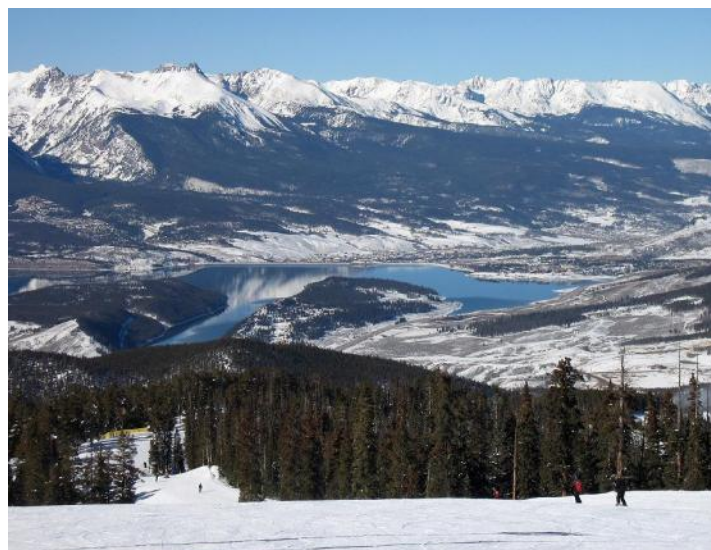
Some general information on Keystone

One of Vail's five ski resorts, Keystone stretches seven miles along the Snake River, over three mountains, 3,128 vertical feet, 3,148 acres of terrain, and three villages with shops, bars, and restaurants.

Located near Dillon in Summit County, CO, Keystone has 125 trails and 20 lifts, including two gondolas. Keystone offers the largest night skiing operation with nine trails and a designated Night Park. Keystone also offers many activities for children.

For more detailed information on the trip, the area, and the hotel please see the trip brochure on the [Ibex Web Site](#).

- Sarah Schmeichel
Trip Leader



August 28	September 16	October 21	November 18
\$200.00	\$400.00	\$400.00	\$219.00

Mt. BACHELOR

Three days of skiing/ riding with an optional 4th day playing golf is the adventure planned for Ibx members in February 2010. We'll be flying into Portland Oregon and taking ground transportation to the fabulous city of Bend, Oregon, about 3 hours away. Bend is famous for its many brewpubs and for its free-spirited way of thinking, which helps create an ideal spot for all vacation-minded individuals. With a population of about 80,000, Bend has the scale to provide for all who vacation here.

Bend is home to the Riverhouse Resort, which will provide us double-occupancy deluxe hotel rooms that include microwaves and refrigerators. There's no need for you to nuke breakfast, however, because the Riverhouse's hot breakfast buffet will prepare you every morning for an active day on the slopes or on the links.

On ski/ride mornings, head with us on our shuttle for the 30 minute trip to Mount Bachelor, a volcano that tops out at 9065 ft and offers 360 degrees of skiing over 3600 acres. It's the sixth largest ski area in the



comparison to your normal course. Golf club rental is available at the resort as well, to make your packing easier.

If you opt out of golf on your rest day, take advantage of the size of the town and do a little shopping. There are over a dozen art galleries and five brewpubs, so there is something for everyone. Even better, there's no sales tax in Oregon, so that's an almost 10% break over what we're paying in Cook County now.

The trip cost for Ibx members is \$1085, which includes airfare, ground transport, a welcome party, 5 nights lodging, 3 days' lift tickets and breakfast every morning. Roundtrip airfare is provided non-stop on United Airlines to Portland, a bonus for those of you wanting to augment your Mileage Plus points.

We depart around 5 PM on Wednesday February 24, and return Monday March 1, so you may need only 3 days of vacation to join us. Sign-up forms are on our website, so fill one out and reserve your spot now. Contact Patrice (or Pam Arnold at ibxtrips2009@skiibx.com) with any questions.

-Patrice Conaway

ibexpatrice@yahoo.com



U.S. Mt. Bachelor's average snowfall is 370", creating an average base of 200". Their vertical drop is 3365 feet. There are 4 terrain parks for those interested in turning things (mainly themselves) upside down.

The mountain prides itself on the latest technology, using electronic-type lift tickets such as those used in Big Sky. All participants receive a souvenir lift ticket ski-zip for the electronic gates. In addition, you can sign up for snow conditions by text message to get up-to-the minute information on your cell phone.

For your rest day, or for those of you who prefer golf shoes to ski boots, you can play unlimited golf on the resort's Riveredge course with a cart for \$48/ day. "Golf on a ski trip", you inquire???

Certainly - because the West Coast's exposure to ocean breezes creates milder temperatures and decent protection in the winter, golf is indeed a possibility in Oregon's version of February. It's similar to Autumn Golf here in the Midwest. Riveredge's slope is 126 from the white tees, in case you need to make a com-



August 28	September 16	October 21	November 18	December 16
\$200.00	\$200.00	\$200.00	\$200.00	\$285.00

ED'S PHILOSO-FEE

All signs are pointing to a great year for skiing! Lou DiFrancisco recently sent out a list of mountain side web cams located at all our North American ski destinations. It was a great piece of work. All the different locations already showed snow on the ground and it is only October as I write this so much more is on the way!

Our first two trips to Keystone and Vail are a success with large groups of folks all signed up and ready to go skiing! I can hardly wait to see Keystone and Copper Mountain for the first time over New Years. I have heard great reviews about the skiing at both Mountains. I have only been skiing for the last eight or nine years, and have never skied that part of Colorado, so this should be fun!

We still have spots open for Mt. Bachelor and Telluride. The cutoff date for those trips is creeping up so if you are on the fence now's the time to commit! Bring your friends, bring your family, bring your dog! Whatever, just join the fun and sign up for a trip in 2010.



Sarah and I stopped by the Windy City Ski Show in Schaumburg over the weekend and met with a number of the other ski clubs in attendance. Some of the other clubs close to us in the northwest suburbs are interested in doing activities together such as Volleyball, Softball, Biking, Boozing, etc. I think this is a great idea and will be discussing with you all on what activities we might conduct together. Denny Gawlik, the great historian of our club, has regaled me with stories of all the activities the clubs used to participate

in years ago. This has fallen off these last years and we may be missing some of the social benefits of interacting with other active, friendly folks similar to ourselves. If anyone has ideas on what activities we could do jointly with these other clubs or has just activities in general they think the club would enjoy, please contact me or Pam Oz so we can start scheduling activities around our ski schedule.

As always, please remember to promote the

(Continued on page 7)

IBEX MEMBERSHIP

We are climbing up the ladder with current members count at 119. This is an increase of 15 from last month. The good news is that we are gaining "New" members to enrich and enhance our club. REMINDER that if you are not a

current 2009 Member, you will not receive the Newsletter or quarterly Directory until you renew. If you have not renewed, you will need to renew prior to signing for a Ski trip. Pre-printed forms will be available for all past members at the Ibx meetings. Blank forms are posted on the Website for downloading in case you can't make it to the meetings

Postcards are available and can be used to advertise IBEX at local town events. Please see me at the next meeting if you have an event that you can help distribute our information.

Our upcoming Christmas party would be a great time to bring friends to get to know our club. If you have any Potential New Members, please bring them to our Dec. 16th Holiday party!

Thanks for your help!

*- Jacquie Wodach
Membership Chair*

A-Basin

Ibx Ski & Snowboard Club

Come join an active, fun group of people who enjoy all types of social activities!!

Ibx in Alaska

Baseball Games

FUN!

ACTIVITIES

The Addams Family

Sunday, December 6th @ 2:00 pm



They're creepy and they're spooky, mysterious and kooky...no, no I'm not talking about IbeX members! I'm talking about *The Addams Family*. Yes, they are back! The new and original play based on the old television series from the 60's is running its pre-Broadway show before heading off to New York.

Just like *Spamalot*, we will get to see the play before it goes off to New York for a very long time. Nathan Lane stars as Gomez Addams and Bebe Neuwirth as Morticia.

We have 20 tickets for the matinee showing at the beautiful Ford Center Theatre in downtown Chicago. Tickets are \$63.00. Please email Pam Oz or see me at the next meeting to sign up.

If you are unable to attend the meeting and would like to reserve your tickets, you may E-Mail Pam at: ibexactivities2009@skiibex.com

February Bistro Evening February 13, 2010

We are working diligently to put together our next Bistro Evening at one of the more delightful French Style restaurants in the North-West Suburbs. Watch this space next month for the details and put it on your calendar right now!

Santa Alert!



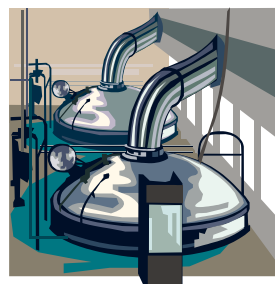
Yes, IbeXers, there really is a Santa Claus and he will be visiting us on December 16th. We ask that everyone bring a Christmas pie, cakes or cookies and IbeX will provide the pizza. Mr. Claus will be handing out gifts to

the kids. Please join us and we celebrate the holidays!

Two Brothers Brewery Recap

Jason and Jim Ebel sure do know how to throw a good party. The Brothers really love what they do. And the nine IbeX members sure appreciate their fine attention to details. You can taste it in every sip.

Gabe, our tour guide, gave us a detailed and very funny, history of Jason & Jim's journey into the micro brewing business. Gabe's a very entertaining guy and he's also the Manager of the restaurant. He led 60 people through the Two Brothers warehouse and explained the difference between



lager and ale and how they distribute 15,000 gallons a week to seven states! After the 45 minute tour, we were given three sample beers (including their own root beer) of our choosing. My thanks to Adolph for introducing me to their Weiss beer—I'm a fan.

Date	Activity
Wednesday - November 25, 2009	Bar of the Month - Mill Rose Inn
Sunday - December 6, 2009	Ford Center Theatre - The Addams Family
Wednesday December 16, 2009	Christmas Party at Gatsby's

BROKEN OAR RECAP

Surprise, surprise, weather continues to be the nemesis of the Broken Oar bike ride. Saturday October 10th with its record low temperature of 30 degrees for this day only a couple of hours before our departure, was no exception. Fortunately the temperatures had climbed to all of 42 degrees by ten o'clock. Another anomaly for the day, we managed to get away only five minutes after ten, no Ibex time for this group. For new readers and members, Ibex time is starting an event 20-30 minutes after a scheduled start time.

An hour and forty-five minutes later we pulled into the Oar and much to our delight, we have the place almost to ourselves. Could it be the

Harley riders, boaters and 42 degree weather don't co-exist? Naturally the service was great. Burgers with guacamole, bacon, cheese along with a couple of brews, seemed to be the predominant choice for lunch. An hour or so later, and all carboed up, we hit the road for our return to Palatine.

This part of our trip featured one and a half flat tires and a tail wind which was appreciated by all. Hot apple cider with a tot of dark rum and dark chocolate brownies greeted the riders at the end of the day. Oh, it was still only 42 degrees. Ah, another feature instead of a bug, the Broken Oar ride starts getting you ready for skiing temperatures.

Thanks to all those who made the trip, all 38 miles, you made it a great day! See you next year.



ED'S PHILOSO-FEE - CONT.

club to your friends, family and co-workers. The more fun activities we run, the more members we add, the more varied and exciting our activities and ski trip destinations will be. It a wonderful virtuous circle we can create by always looking for new ways to promote and add new members.

Don't forget to join us at the Millrose Pub the Wednesday night before Thanksgiving. It has become one our better traditions enjoyed by all.

Thanks and have a happy Thanksgiving.

- Ed Fee

Cascade Drive up Ski Trip

Sign-ups are in progress for the Premier Midwest Trip, our Cascade Mountain Drive up trip slated for January 29-31, 2010. Trip features; Two day lift ticket, lunch each day, lodging, and ski lessons provided by the Ibx Ski School. Deposits of \$50.00 per person will be taken at our November 4th meeting. Final payment is due January 6, 2010.

The Midwest Trip is a great opportunity to practice for your Western trips, party with your Ibx Buddies, and introduce friends to the club. Bring the family along and



teach the Little Goats the Ibx ways.

We will be staying at the Best Western in Portage and will have the option of using the Motel bus for transportation to Cascade Mountain. Your cost will be;

Adult:	\$190.00
Teenager (13-17):	\$87.00
Age 12 and lower:	\$25.00

Note: Rates are based on two adults in each room.

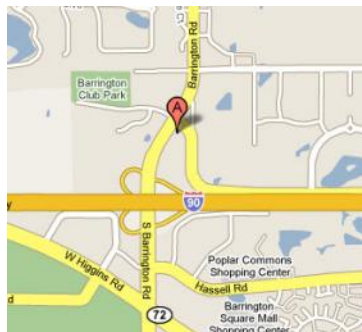
Noted poet, story teller and raconteur, Jeff Smith will be your trip leader.

E-Mail: ibextrips2009@skiibex.com

Bar of the Month



Millrose Restaurant and Brewing Company
 45 South Barrington Road
 South Barrington, IL 60010
 847-382-7673
 Wednesday, November 25th
 6:00 PM



Compression Reducer X

(Continued from page 1)

shouldn't, too—regardless of age, ability, level of aggression, fitness, etc. It's built to flex in all the directions your body flexes.

Comfortable straps and a half-zip vest keep it securely in place. You'll barely know you're wearing it, except that it can be a little warm on sunny days. Parents can rest easier knowing their teens have some spine protection. For that matter, moms and dads who don't bounce like they used to might like the idea of a little extra padding for their own aging bodies.

(\$175, scottusa.com)



TELLURIDE—SPRING SKIING

We depart on March 20, 2010 from Chicago O'Hare on American Airlines Flight AA-2447 at 9:25: AM and arrive in Montrose, CO at 11:30 AM. From there it is a 65 mile bus ride to Telluride.

The Town of Telluride is located in the southwest



corner of Colorado in the spectacular San Juan Range of the Rocky Mountains. The town is situated in a dramatic box canyon and is surrounded by the twelve and thirteen thousand foot peaks of the Uncompahgre National Forest. Telluride a more out of the way, full-service ski resort with exceedingly short lift lines.

We'll be staying in the Mountain Village at the Bear Creek Lodge. The Bear Creek Lodge is ski in/ ski out and located near the gondola. All condominiums include a generous size living room with a gas fireplace, furnished in a warm and inviting mountain decor; a spacious dining area, full gourmet kitchen, jetted tub, mountain views, plush robes, luxurious bedding, washer/dryer, wireless internet, DVD/VCR entertainment center, in room safe, hair dryers, ironing board/iron, daily housekeeping, and premium coffee. Luxury amenities at the Bear Creek Lodge include three hot tubs, sauna and a heated pool.

Telluride has over 1,700 acres of skiable terrain serviced by 18 lifts including, 2 gondolas, 8 quad express lifts, 2 triple chairs, 2 double chairs, and 4 surface lifts. This uphill capacity gives skiers and boarders access to 92 separate runs rated as 24% beginner, 38% inter-mediate, and 38% advanced/expert. The longest run, *Galloping Goose*, is 4.6 miles long. Gold Hill's Lift #14 provides access to the highest skiable point at 12,255ft. Although most of the runs descending from the top of Lift #14 are double black, there is an easy descent from this lift, coming down the *See Forever* ski run on top of the ridge is among the best alpine vistas in the world.

Some of the Ibx group activities include a wine and cheese welcome party, group dinner and pub crawl.

We return to Chicago on March 27, 2010 departing Montrose Airport on American Airlines Flight AA-2456 at 12: 25 PM arriving at Chicago O'Hare at 4:05 PM.

All of this for \$1259. Be sure to reserve your spot on this trip because it will fill up fast.

-Mike Psaras, Trip Leader



Trip Payment Schedule

<u>August 28</u>	<u>September 16</u>	<u>October 21</u>	<u>November 18</u>	<u>December 16</u>	<u>January 20</u>
\$200.00	\$200.00	\$200.00	\$200.00	\$200.00	\$259.00

FALL COLORS GOLF RECAP

As the leaves have fallen, the "Fall Colors Golf" outing has come and gone again. The annual event turned out to offer some great amenities. The courses were in great shape (unlike last year's war zone), the hotel was new and very pleasant, and the meals at Evergreen were great! The Ever-



The 19th Hole

green employees were very service oriented and organized which made our event very enjoyable. They did such a great job that we all voted to go back again next year. Makes my job a lot easier!

Only six Ibex headed up to Evergreen on Friday with "iffy" weather forecasted. We did manage to get in 16 holes until it started to rain. A couple threw in the towel and the others finished as the rain passed. After check in we headed to the local pub. Although we waited forever to get our food, the food was good and warming from the cool day.

On Saturday the rest of the group headed up to Evergreen for a 10:00AM start time. Saturday was Individual Tournament play on the North and South 9's. Everyone had a great day with beautiful weather. Evergreen served a delicious buffet

for our Saturday group dinner. We followed dinner at the October Fest celebration outside with plenty of wine and beer to go around. Several Ibex were seen kicking their heels up to some Bavarian dance followed by more Ibex dancing to the Chicken dance. Uncle Hank chose to dance with arms wrapped around himself as a couple. Whatever floats



The "RED" Team

your boat!

Sunday was an early morning with breakfast at the hotel and tee times starting at 8:00AM. It was another beautiful day for Team Tournament play on the East and North courses followed by our closing party. Evergreen served a great appetizer spread in the new Pub and prizes were had by all attendees. Scoring for the Individual and Team events were loaded into Excel by our one and only "Lou D." under the Peoria system. The Peoria scoring system was incorporated this year to help make it more advantageous for non-golfers to win. Murphy's law, I'm not sure if it worked that well this year. We'll try again next year. I want to give a big "THANKS!" to Lou for volunteering to handle loading scores for 2009.

NOW...the good news...Winners!

Saturday Individual Play

- Men's Low Net - Wayne Wodach - 69
- Women's Low Net - Debbie Dukes - 77
- Men's Closest to the Pin - John Brandt
- Women's Closest to the Pin - Marilyn Raidy
- Men's Longest Drive - Jeff Smith
- Women's Longest Drive - Sally Childress

Sunday Team Play

- Two Teams Tied: - Wayne Wodach, Jacquie Wodach, Debbie Dukes, John Brandt—Joe Heater, Joan Heater, Kathy Burns, Patrice Conaway
- Men's Longest Drive - Jeff Smith
- Women's Longest Drive - Marilyn Raidy
- Men's Closest to Pin #3North - Wayne Wodach
- Men's Closest to Pin #4East - Jeff Smith
- Women's Closest to Pin #7East - Sally Childress
- Women's Closest to Pin #9North - Margie Krizizke



Jacquie "Golfing Director"



Curve you "putz!"

VAIL COLORADO - CONT.

(Continued from page 1)

"everyman's everything." That has been the case since founder Pete Siebert envisioned Vail as a winter resort – not a ski area- when he opened a slice of Bavaria in Colorado in 1962. Pete's paradise now stretches seven miles, with 5,289 acres, 3,450 vertical feet, and 31 lifts. Vail works hard at creating reasons for generation after generation of skiers to return to Pete's place and the Back Bowls are as good as it gets.

By the way, Beaver Creek was voted the # 5 spot in the same survey & we have interchangeable lifts tickets so we will be able to take advantage of skiing 2 of the top 5 ski destinations. Here's some of the ratings for Beaver Creek - # 2 Grooming, #3 Service, # 4 on Mountain Dining, # 9 Lifts. The article states, "Never overcrowded, even on weekends".

You will be joining your fellow Ibex for our first weeklong trip to exiting Vail for the amazing price of \$1198 for a week of superb skiing and fun galore. Vail has it all – outstanding skiing with three distinct areas of the mountain, including **seven bowls and over 5 thousand acres** of terrain. At **seven miles wide**, finding fresh

tracks is as easy as finding elbow room. In fact, on an average day, there are only two skiers per acre, and on a busy day, only four! Vail receives an average of **346 Inches of snow** each winter and combined with **300 days of sunshine a year** and you've got perfect conditions.

We've also booked **primo accommodations at the Vail Spa** - located in Lionshead which is conveniently located within walking distance to Vail's Eagle Bahn Gondola. Condos have full kitchens, living and dining areas, washers and dryers and complimentary wireless Internet access. Check out the **Spa with hot tubs, saunas, steam rooms and indoor and outdoor pools.**

There will be plenty of opportunities to party including a Welcome Reception, Group Dinner, Ibex/ Louisville Ski Clubs Pizza Party—Hosted by Vail Resorts and a Pub Crawl.

Remember – start your "get in shape" for ski season routine NOW and think S-N-O-W!

-Pam Arnold Chiechi

Trip Chair

847-915-2887

<u>August 28</u>	<u>September 16</u>	<u>October 21</u>	<u>November 18</u>
\$200.00	\$400.00	\$400.00	\$198.00

VAIL - MOUNTAIN CAM'S OCTOBER 29, 2009



CHILE - SANTIAGO & VALLEE NEVADO

Cosmopolitan, Cultured, Captivating Chile - All Ways Surprising !!!

Adventure, Wine Tasting, Skiing & Fun – don't miss out on your chance to participate in the 1st ever IbeX trip to the Southern Hemisphere. We will depart on Fri., Sept. 10, 2010 to Santiago, Chile with skiing @ Valle Nevado and an optional excursion to Buenos Aires. Tango anyone? Hey, it takes 2 to tango! It's important to sign up early for this one in case we need to work with our trip provider to add more spots. Please let me know if you require information regarding payment by credit card option for the Chile trip (after the initial sign up deposit). Don't miss out – sign up today!

Santiago City Tour

You will visit the most important historical sites of Santiago including the downtown area surrounding the **Plaza de Armas** and the **Presidential Palace**. You will also pass by the **Mercado Central**, one of Chile's largest fresh seafood markets and take a stroll by the many bustling stalls to see the tremendous variety



available from Chile's bountiful sea. You will visit some of the lesser known barrios of Santiago including, **Republica** and **Concha y Toro**. Initially constituting the outskirts of the city, the capital's constant growth transformed the area into a privileged neighborhood and home of Santiago's high society. There will be time to walk around and take photos of the many styles of architecture from dating back to the 19th and early 20th century. Continuing through the **Las-**

tarrias neighborhood you will walk through the **Parque Forestal** passing by the **Bellas Artes Museum**. For a scenic vista of the city, you will visit the top of **Cerro San Cristobal** hill 600 feet above the city. Your final stop will be the picturesque **Los Dominicos Craft Market** with over 150 Chilean artists where you can enjoy a stroll through the pleasant atmosphere of the artisan village or have lunch independently.

Maipo Valley Wine Tour

Departing Santiago, you will drive south along the foothills of the Andes to the **Maipo Valley**.



The valley, the oldest and most famous of Chile's wine valleys, is home to many of Chile's famous wineries. You will travel back in time to 1883 when Don Melchor **Concha y Toro** brought grapevines from Bordeaux to Chile and established one of Chile's most important wineries. You will see how the new merges with the old, including a visit to the Casillero del Diablo, the "devils corner" in the ancient part of the cellars. Next stop, one of the jewels of Chile, **Viña Santa Rita**, founded in 1880. You will visit the winery and cellars before our lunch in the winery's Doña Paula Restaurant, which is a certified national monument.

Concha y Toro Vinyards

There are few places in the world where nature has favored a territory as much as in the Chilean Central Valley, where rich sun shines on the vineyards about 300 days a year. The soft ocean breezes, impressive Andes mountains, perfectly balanced soil components and clean mountain rivers create an ideal micro-climate for cultivating the noblest of French stock: Cabernet Sauvi-

CHILE - SANTIAGO & VALLEE NEVADO

(Continued from page 12)

gnon, Chardonnay, Merlot, Carménère, and Sauvignon Blanc, among others..

The Port City of Valparaiso and Viña del Mar (full day)

You will drive west approximately one hour and a half in the direction of the coast and pass through the lush agricultural valley of **Curacavi** and the now famous **Casablanca** wine valley. Our coastal tour will begin in **Valparaiso**, one of the first cities founded by the Spanish, it is now a UNESCO World Heritage site. You will begin your tour in the downtown sector of the port learning about the history of Valparaiso and its importance in South American trade and commerce. Spread along spectacular steep hills and splendid aging buildings you will ride the century old hillside ascensors (elevators) and walk through the **Concepcion** and **Alegre** neighborhoods. Your lunch in Valparaiso will be at **Coco Loco**. Located on the 22nd floor of the prestigious Costanera building it has magnificent views of the Pacific coastline. After lunch, our destination will be the resort city of **Viña del Mar**, also known as "ciudad jardin" (city of gardens) because of its lush gardens and palm-lined boulevards.

Valle Nevado

Located in the heart of the Andes, 1-1/2 hours from Santiago, Valle Nevado Resort is the largest winter resort in the Southern Hemisphere and is probably the most modern in Chile. Nested in a wonderful natural setting, it is a world apart, offering more than 22,000 acres (34 square miles) of skiable terrain Valle Nevado Resort is famous for powder skiing and phenomenal views of the Andes Mountain Range With modern lifts, you can enjoy more than 25 dive4rse, fully-groomed runs; the terrain is immense and all above tree line.

Valle Nevado Resort Stats:

- 278 inches of annual snowfall
- 22,236 acres, 12 lifts
- Top elevation: 12,038 ft.
- Lowest elevation: 9,381 ft.
- 14% beginner, 30% intermediate, 56% advanced / expert



Optional Extension Buenos Aires

Land package only \$529, air and flights to be priced and confirmed 330 days prior to departure

4 nights lodging at the Hotel Helia

Includes:

- Airport transfers
- Airport meet and greet
- Breakfast daily
- ½ day city tour Buenos Aires
- Tango show with dinner and wine

Options available for lunch and horse back riding
Option available to take tour to Uruguay.

Glen Chiechi
Trip Leader

Pam Arnold
Trip Assistant

847-358-1504

Trip Payment Schedule

August 28	October 21	December 16	February 17	April 21	May 19
\$200.00	\$400.00	\$400.00	\$400.00	\$400.00	\$400.00
July 21	Buenos Aires Extension	August 28	February 17	April 12	July 21
\$475.00		\$100.00	\$100.00	\$100.00	\$229.00



2009-2010 MEMBERSHIP APPLICATION

Ibex Ski & Snowboard Club

Mail to: Membership Chairman, Ibex
 P.O. Box 1542
 Palatine, IL 60078

Date: _____
 Check #: _____
 Recorded: _____

Membership type:		
<input type="checkbox"/> Single E-Mail \$20	<input type="checkbox"/> Couple E-Mail \$35	<input type="checkbox"/> Family E-Mail \$35
<input type="checkbox"/> New membership	<input type="checkbox"/> Renewal	<i>Make checks payable to Ibex Ski Club</i>
Name (1): _____ <input type="checkbox"/> M <input type="checkbox"/> F	Name (2): _____ <input type="checkbox"/> M <input type="checkbox"/> F	
Street address: _____	E-mail (2): _____	
City, state, zip: _____	Home phone (2): _____	
E-mail (1): _____	Work phone (2): _____	
Home phone (1): _____	Cell phone (2): _____	
Work phone (1): _____	Birth date (2): ____/____/____	
Cell phone (1): _____	For family memberships, List names and ages of children:	
Birth date (1): ____/____/____	_____	

I am a/an: <i>(check all that apply)</i>	<input type="checkbox"/> Alpine skier <input type="checkbox"/> Non skier <input type="checkbox"/> Snowboarder <input type="checkbox"/> X-country skier <input type="checkbox"/> Beginner <input type="checkbox"/> Intermediate <input type="checkbox"/> Advanced	I am a/an:	<input type="checkbox"/> Alpine skier <input type="checkbox"/> Non skier <input type="checkbox"/> Snowboarder <input type="checkbox"/> X-country skier <input type="checkbox"/> Beginner <input type="checkbox"/> Intermediate <input type="checkbox"/> Advanced
I prefer to ski: <i>(check all that apply)</i>	<input type="checkbox"/> Midwest <input type="checkbox"/> West <input type="checkbox"/> East <input type="checkbox"/> International <input type="checkbox"/> 7 day trips <input type="checkbox"/> weekend trips <input type="checkbox"/> 4 to 5 day trips <input type="checkbox"/> other: _____	I prefer to ski:	<input type="checkbox"/> Midwest <input type="checkbox"/> West <input type="checkbox"/> East <input type="checkbox"/> International <input type="checkbox"/> 7 day trips <input type="checkbox"/> weekend trips <input type="checkbox"/> 4 to 5 day trips <input type="checkbox"/> other: _____
Ibex Ski & Snowboard School	<input type="checkbox"/> I have taken a lesson in the past <input type="checkbox"/> I would like to take a lesson this year	Ibex Ski & Snowboard School	<input type="checkbox"/> I have taken a lesson in the past <input type="checkbox"/> I would like to take a lesson this year
I would like to help with:	<input type="checkbox"/> Activities <input type="checkbox"/> Membership <input type="checkbox"/> Trips <input type="checkbox"/> Racing	I would like to help with:	<input type="checkbox"/> Activities <input type="checkbox"/> Membership <input type="checkbox"/> Trips <input type="checkbox"/> Racing

How did you learn about Ibex Ski & Snowboard Club? _____

IBEX SKI & SNOWBOARD CLUB MEMBERSHIP AGREEMENT	
<p>In consideration of the opportunity to participate and/or my participation in any trips, events, activities or lessons of the IBEX SKI & SNOWBOARD CLUB, I, for myself and for my heirs, assigns, executors and administrators hereby agree that IBEX SKI & SNOWBOARD CLUB and its officers, directors, trip and event leaders, instructors, members, representatives and any other persons acting on its behalf shall not be held liable for any injuries, damages, expenses or inconveniences to my person or property, howsoever caused by the negligence of the above parties. I also agree to indemnify and hold the above parties harmless from and against any and all actions, claims, demands, liability, loss, damage and expense of any kind, including attorney's fees, arising from such claims.</p> <p>I am aware of and familiar with the inherent risks involved in the sport of skiing, trips, events, activities, lessons and any sport or social activities, and I understand that I am assuming those risks.</p> <p>IBEX SKI & SNOWBOARD CLUB reserves the right to withdraw an activity or trip, to refuse to accept or retain any person as a member or an activity or trip at any time, or to make changes in the published itinerary, whenever, in its sole judgment, conditions warrant or if it deems it necessary for the comfort, convenience or safety of the passengers.</p> <p>If accepted to the membership of IBEX SKI & SNOWBOARD CLUB, I will abide by the Constitution and By-Laws, support its activities and pay the established dues. I have read and agree to the above.</p>	
SIGNATURE (1): _____	DATE: _____
SIGNATURE (2): _____	DATE: _____

"Da" Back Page

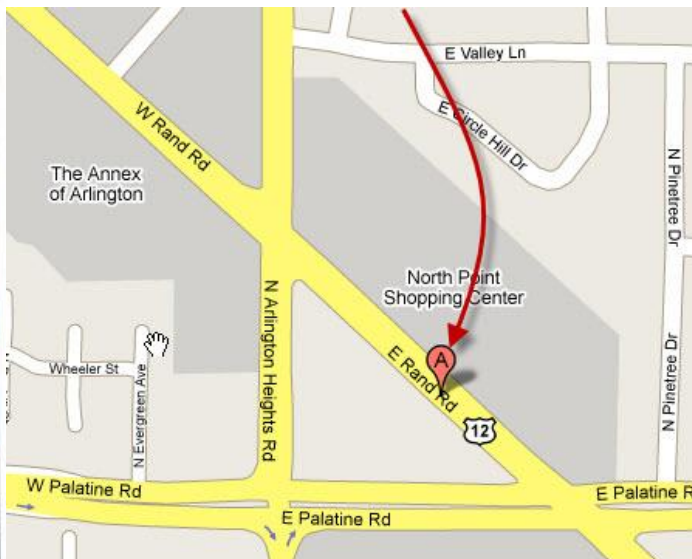
EXECUTIVE BOARD MEMBERS

President	Ed Fee	(847) 496-7457
Trip Chair	Pam Arnold	(847) 358-1504
	Patty Blades (Assistant)	(847) 289-0956
Membership Chair	Jacquie Wodach	(847) 223-7932
Activities Chair	Pam Oziemkowski	(773) 427-9298
Secretary	Joe Heater	(847) 991-2160
Treasurer	Jean Bagel	(847) 436-6876
	Sarah Schmeichel(Asst.)	(847) 496-7457
Web Address: WWW.SKIBEX.COM		

Meetings: 1st & 3rd Wednesdays of every month

Gatsby's Sports Pub

427 East Rand Road - Arlington Heights, (847) 253-7200



Address Change? Let us know by mailing your new address to:

**Ibex Ski & Snowboard Club
P.O. Box 1542
Palatine, IL 60078**

or via E-Mail at:

IbexMembership2010@Skilbex.com

Name: _____

Street: _____

City, State, Zip: _____

Home Phone: _____

2009–2010 MEMBERSHIP RATES

Single	\$20.00
Couple/Family	\$35.00

Note: The Old Goat is distributed via E-Mail or you may access it on the Ibex Web site.

NOVEMBER BIRTHDAYS

Jeff Pribil	11--02	Bryan Surek	11--20
Barb Schwartz	11--03	Alan Zagoria	11--22
Mark Serafin	11--03	Colette Lozins	11--24
Lisa Spiegel	11--05	Chris Smith	11--24
Jacquelyn Homan	11--07	William Hoffie	11--25
Pat Lullo	11--10	Amy Pikarsky	11--26
Patrick Marron	11--10	Daniel Casey	11--28
William D. Moore	11--13	Mindy Parry	11--28
Frank Eichstaedt	11--15	Carl Berg	11--29
Maria Coles	11--18	Ivana Horak	11--29
Elena Ghilea	11--19	Kirby Kiesgen	11--29

PARTING SHOTS



Colonoscopies are no joke, but these comments during the exam can be quite humorous. A physician claimed that the following are actual comments made by his patients (predominately male) while he was performing their colonoscopies:

1. 'Take it easy, Doc. You're boldly going where no man has gone before!'
2. 'Find Amelia Earhart yet?'
3. 'Can you hear me NOW?'
4. 'Are we there yet? Are we there yet? Are we there yet?'
5. 'You know, in Arkansas, we're now legally married..'
6. 'Any sign of the trapped miners, Chief?'
7. 'You put your left hand in, you take your left hand out...'
8. 'Hey! Now I know how a Muppet feels!'
9. 'If your hand doesn't fit, you must quit!'
10. 'Hey Doc, let me know if you find my dignity.'
11. 'You used to be an executive at Enron, didn't you?'
12. 'God, now I know why I am not gay.'
13. 'Could you write a note for my wife saying that my head is not up there?'

And the best one of all.

Ibex Ski & Snowboard Club

November 2009

Sun	Mon	Tue	Wed	Thu	Fri	Sat
1	2	3	4 <i>Club Meeting at Gatsby's</i>	5	6	7
8	9	10	11	12	13	14
15	16	17	18 <i>Club Meeting at Gatsby's</i>	19	20	21
22	23	24	25 <i>Bar of the Month Mill Rose Inn Annual Thanksgiving party</i>	26	27	28
29	30					

December 2009

Sun	Mon	Tue	Wed	Thu	Fri	Sat
		1	2 <i>Club Meeting at Gatsby's</i>	3	4	5
6 <i>Adams Family Ford Center Theater</i>	7	8	9	10	11	12
13	14	15	16 <i>Club Meeting At Gatsby's Christmas Party</i>	17	18	19
20	21	22	23	24	25	26
27	28	29	30 <i>Keystone Ski Trip Departure</i>	31 <i>Keystone</i>		