



## IBEX SKI & SNOWBOARD CLUB

# THE OLDE GOAT



MEETS THE 1ST & 3RD WEDNESDAY OF EACH MONTH AT:  
**GRAVE**

1204 W. RAND RD. ARLINGTON HEIGHTS, IL.

### JANUARY 2008

#### MEETINGS

7:00 PM BOOZE  
& SCHMOOZE

#### 8:00 PM MEETING

> JAN 2

> JAN 16

#### EVENTS

> JERSEY BOYS  
-JAN 5

> WILMOT SKIING  
-JAN 6

> BOM  
-JAN 11

#### HIGHLIGHTS THIS ISSUE:

Wilmot Ski/Board 2

Lou's Log 3

Ski Trip Info 4

Ski Games 8

## ALYESKA SKI ADVENTURE

**T**hirty six Ibex are leaving O'Hare Wednesday night, Feb. 27 on a direct flight to Anchorage, then a short 45 minute bus ride to our hotel; the Alyeska Resort.

The Alyeska Resort just completed a multimillion dollar guest room renovation, which promises to enhance our guest experience. It also boasts a indoor heated 25x45 feet lap pool with a vaulted wood beam ceiling and a 16-person hot tub at the end of the pool with bay windows that overlook a pond and the North face of Mt. Alyeska. There is also a sauna, and an exercise room Thursday morning brings in our first day of skiing! Each person will re-



ceive three winter sport passes. Each one is good for:

1. All Day Lift Tickets for One Adult
2. Tubing Park Tickets for Two
3. Snowshoe Rentals for Two

*(Continued on page 6)*

## IBEX PRESIDENCY TRANSITION

**A**s you may know, Craig Moon has been putting up a strong fight against esophageal cancer --- that fight manifests its challenges at unpredictable times, which makes a committed, pre-planned schedule currently difficult for Craig. Therefore, Craig has decided to step down from the presidency for the duration of our fiscal year. He does, however, look forward to continuing his service on the BOD. As a result, we need to fill his role. As you know, this is an unusual occurrence for us, so I'd like to ensure everyone understands the process that followed.

According to our constitution (which

is available to all on the Ibex Website --- look under "Officers"), vacancies on the EB are to be "filled by appointment by the Board of Directors. All such appointments require a 2/3 majority of the entire BOD." There are a variety of ways this responsibility can be fulfilled; I opted to solicit Craig's recommendations first. We discussed at length multiple candidates. At the heart of the discussion was the experience of the candidates and their current and prior involvement in the club's leadership. That discussion resulted in a proposal for the BOD. I subsequently contacted each BOD member to both discuss the proposal as

*(Continued on page 3)*

# WILMOT SKI/BOARD DAY

**L**ocal Ski Day has been rescheduled for **Sunday January 6<sup>th</sup>**. Ibex Ski School will be providing free lessons, video analysis, and possibly some editorial comments afterwards in the bar! Since not everyone is going on a vacation trip we want to give everyone the opportunity to improve their skiing and snowboarding skills. Additionally we will be offering videotaping (yes we are old school and still use magnetic tape) for those who want to reaffirm why they don't think they need lessons or can learn anything at Wilmot (you know who you are). For those of you who have been in the club past years, you may recall previous Learn to Ski and Board events at Wilmot. This year we will be offering the same event on Sunday January 6th. We will be offering both skiing and snowboarding lessons.

Cost: Lift/lesson \$30 Lift/ski rental\*/lesson \$40Lift/snowboard rental\*\*/lesson \$50NOTE: Above "Lesson" is a Wilmot Ski School Lesson (must be age 7 or above) in addition to the Ibex provided lessons. Payment is due at the time of sign-up. Lift tickets are good from 9:30 a.m. until 4:30 p.m. This pricing assumes we get enough people to qualify. We need 15 people in order to get the discounted price. In the event that we do not get enough people you will be notified and your deposit refunded. You can purchase a regular priced ticket at Wilmot for \$40 (\$27 under 12) that does not include the Wilmot lesson, with rentals being \$25 (\$22 for under 12) for skis, and \$36 for boards. Members and friends are welcome to come out and ski and ride with us. You do not have to sign up for a lesson to take advantage of the discounted tickets. Children must at least 8 years of age and must be a relative of a member in order to take lessons.

**"we will be offering videotaping"**

Waivers must be signed by a parent and the relative accompanying the child on the trip.

Beginner Lessons will begin at 9:30 a.m. Meet by the Ski School Bell in front of the main lodge. Other lessons will be scheduled based on signups and skier levels.

Plan to meet by 8:30 a.m. to pick up your rental coupons and lift tickets. If you are only picking up lift tickets, 9:00 a.m. should be fine. This should give you enough time to get ready. Look for us at a table near the Ski School Desk in the Main Lodge.

Renting equipment:

If you are renting equipment plan to arrive by 8:30 a.m.

Rentals include skis, boots and poles or snowboards and boots.

Security deposits will be required: Each person renting ski equipment is required to leave a \$10.00 cash deposit and I.D.

Snowboard and Boot deposit is \$100.00 cash, VISA, MC, AE, DIS. Drivers license or photo I.D. also required for snowboard equipment rental.

Wilmot Ski Rental Packages include Look bindings, easy entry boots, and poles.

After Lessons:

We will meet in the BAR, located in the middle of the main lodge, where we will order pizzas and snacks for dinner. (Brown bagging is acceptable!) They also have TVs in this room in case there any other sports events taking place!

Sign-ups and deposits for this event will be taken at December meetings and the first January meeting. If you cannot attend the club meetings or would like more information, please contact

**Bob Kimicata** 847-394-4105 or [rdkimicata@krailinc.com](mailto:rdkimicata@krailinc.com). Cell for event day contact is 773-718-2232.



# LOU'S LOG

Hey there Ibex Members. You never know what turns life brings, and certainly this was not a position I expected to be in. As you all know from Janine's note in this newsletter, Craig has had to step down from the presidency as he battles cancer.

I decided to volunteer for several reasons, but mostly due to my friendship with Craig and my desire to try and carry the torch for him during this incredibly difficult time. I know I share Craig's passion in one common goal: seeing Ibex continue to succeed and thrive in its main purpose, to bring people together to create great memories. Such memories may come during skiing, golfing, biking, picnicking, or simply getting together with friends, whether new, or more familiar. I look forward to the challenge the BOD has entrusted me with to maintain the Ibex commitment to fun.

As I write this note, I am done packing for the Ibex New Year's trip to Salt Lake City. With Mother Nature cooperating fully and Janine's instigational (I mean organizational) skills there are 26 or so Ibex Skiers/Boarders sure to be heading for a great time.

With Mindy's activities, and Sarah's trips I hope you all find a way to be at an Ibex event soon. I know many of our western trip spots are now accounted for, but please if you're interested in going, get on those wait lists. We constantly try to get more spots and there is always a cancellation or two at the last minute, that may enable you to get on one of our fun and friendly Ibex Ski trips. Our Midwest trip still has plenty of room to meet new friends and get in a few turns at the same time Happy New Year and I hope to see you at an Ibex meeting or event real soon.

-Lou DiFrancisco



**"...bring people together to create great memories..."**

## IBEX PRESIDENCY -CONTINUED

*(Continued from page 1)*

well as to specifically request any dissenting opinions, comments or suggestions.

There was absolute unanimity in the decision: Lou DiFrancisco is the appropriate candidate to carry on the role of president for the duration of this year.

Most (if not all) of you reading this know Lou --- in his 12 years in the club, he has been an active, contributing member to the success of our club: Asst Trip Chair for a year, Trip Chair for 2 years, President for 2 years, BOD member for 1 year, and Treasurer in the current year. Before accepting this nomination, Lou

seriously considered his current responsibilities (family, professional and club-related); he weighed the needs and responsibilities of each and his ability to address those needs at the standard of excellence that is his benchmark. He fully understands the role he is assuming. We all support Lou in this nomination and are confident his experience will contribute to helping us finish another successful year in the standard that he shares with Craig and that has become the standard for the outstanding leadership we have had and continue to have in the EB overall.

--Janine Westlund, BOD President

# 2008 TRIP PAYMENT SCHEDULE

Payment	SALT LAKE		LAKE TAHOE		CASCADE/ DEVIL'S HEAD		ALYESKA		BRECKENRIDGE	
	Amount	Date due	Amount	Date due	Amount	Date due	Amount	Date due	Amount	Date due
1	\$		\$ 100	9/5/07	\$ 50	9/5/07	\$ 100	9/5/07	\$ 100	9/5/07
2	\$		\$ 450	9/19/07	\$ 125	1/02/08	\$ 350	10/3/07	\$ 350	10/17/07
3	\$		\$ 450	11/7/07			\$ 350	11/21/07	\$ 350	12/5/07
4	\$		\$ 286	12/19/07			\$ 346	1/2/08	\$ 336	1/16/08
<b>total</b>	<b>\$</b>	<b>1,063</b>	<b>\$</b>	<b>1,286</b>	<b>\$</b>	<b>175</b>	<b>\$</b>	<b>1,146</b>	<b>\$</b>	<b>1,136</b>

## 2008 SKI TRIPS

### Mail payments to:

**Ibex Ski Club  
PO Box 1542  
Palatine, IL. 60078**

### Fantastic Ski Trip Summary:

**Salt Lake City:**  
12/27/07 to 1/1/08

**Lake Tahoe:**  
12/26 to 2/2

**Cascade/Devil's:**  
2/8/ to 2/10

**Alyeska:**  
2/27 to 3/3

**Breckenridge:**  
3/29 to 4/5

If you're interested in Cascade/Devil's Head, please sign up as soon as possible. We have spots available for the taking. Contact Jean Bagel or me for any information. There are minimal spots available on Breckenridge. If you'd like to go on that trip, please let Lou or me know as soon as humanly possible. First come, first serve! Lake Tahoe and Alyeska are full. We are taking names for wait lists if you're interested in either one of those trips. Let the Lepsi's, Ed Fee

or me know if you'd like to be on a wait list. Check out Ed's article on Alyeska and a preview of what merry misadventures and hijinx will ensue. The Trip Payment Schedule is directly above this article. Please take note of when your payments are due and please be prompt in mailing your checks to the P.O. Box or bringing them to the meeting. Contact your respective trip leader/s or me for any additional information.

-Sarah

## BRECKENRIDGE SKI TRIP

Late spring in Colorado with about 450 of your closest CMSC ski friends...sound like a great time to me. The cost is \$ 1,136.00 that includes six days of lifts for Breckenridge and Vail. We will depart Saturday, March 29 returning Saturday, April 5. Lodging is Beaver Run at the base of chair nine.

The air has not been set but the airline will be either American or United. The open day is Wednesday, so we will have the group dinner on the 2<sup>nd</sup>. We have plenty of spots, so sign up with your friends. Call me @ 847-301-1025 for more information.

-Lou

## THREE FEET OF SNOW AT LAKE TAHOE

We are now a month away from a week long excursion to Lake Tahoe, so let it snow let it snow.

Trip includes three days at Heavenly, one day at Squaw Valley and one day at Kirkwood. We also will be taking a dinner cruise on Lake Tahoe as part of the Squaw Valley ski day. We will be staying at the Forest Suite condos, which feature two bedroom condos that are walkable to Heavenly Village and gondola, casinos and nightlife.

The hotel will have a welcome reception on the first evening including alcohol. We are planning lbex activities, which will include a group dinner and pub crawling from California to Nevada, and hopefully back.

## CASCADE/DEVIL'S HEAD

**D**ecision 2008: Will you be part of the Skiing/Boarding Party at the Devil's Head/Cascade Midwest Trip? Or will you be home eating processed cheese?!

**January 2 lbex Meeting is the last day to sign up for this trip!**

The Midwest trip is always a fun time. We'll have free ski or snowboard lessons at Devil's Head or Cascade!

Snow report: DH 12/24, base 32-51", 8" new snow, 100% open. Cascade, 12/26, base 18-40", 100% open.

Hey, Ho, Let's Go! Cascade and Devil's Head. Drive up trip. February 8-10, 2008.

Final sign-up is January 2, 2008.

Final payment of \$125.00 is due that day as well.

The trip includes two nights lodging

Trip Highlights:

Heavenly has been voted #10 resort in 2007 *Skiing* magazine along with the #2 party spot.

Squaw Valley Ski Resort was the site of the 1960 Winter Olympics and offers 2850' vertical along with 100+ trails.

Kirkwood Ski resort features 2000' vertical and 65+ runs and gets over 500 inches of snow boasts some of the deepest snow in North America.

The trip is currently full, but we are taking a waiting list. If you need any information please let me know.

*-Mike & Carolyn Lepsi*



### Fantastic Ski Trip E-Mail Addresses:

#### Salt Lake City:

Janine Westlund  
[saltlake@skiibex.com](mailto:saltlake@skiibex.com)

#### Lake Tahoe:

Mike & Carolyn Lepsi  
[tahoe@skiibex.com](mailto:tahoe@skiibex.com)

#### Cascade/Devil's:

Jean Bagel  
[cascaded@skiibex.com](mailto:cascaded@skiibex.com)

#### Alyeska:

Ed Fee & Mickie Polk  
[alyeska@skiibex.com](mailto:alyeska@skiibex.com)

#### Breckenridge:

Lou DiFrancisco  
[breck@skiibex.com](mailto:breck@skiibex.com)

in the Wisconsin Dells, double occupancy. There will be a complimentary wine and cheese party. Get all of this for the low cost of \$175.00 per adult.

Prices for children staying in room with two paid adults: <5= 0; 6-12= \$70.00; teen= \$120.

The Alakai Hotel features in room microwave and refrigerator. There is an indoor hot tub and swimming pool, and a small water-park [www.alakaihotel.com](http://www.alakaihotel.com) to view the amenities. There is complimentary coffee and coffee cake in the morning.

Lift tickets are full day and night skiing. Saturday ski at Devil's Head [www.devilsheadresort.com](http://www.devilsheadresort.com). Sunday ski at Cascade [www.cascademountain.com](http://www.cascademountain.com).

The wine/beer and cheese party will

*(Continued on page 8)*



## ALYESKA SKI ADVENTURE - CONTINUED

(Continued from page 1)

4. Cross Country Ski Rentals
5. High Performance Ski Rentals
6. Choice from the Pond Café Lunch Sandwich menu for two
7. Aerial Tram Tickets for Two
8. Glacier Express Lunch for Two
9. Full Ski Tuning
10. Dinner for One in the Pond Café
11. Good towards any purchase in their Logo Shop
12. Good towards any service in our Day Spa

Most folks will be taking the tramway up to the top of Mt. Alyeska. The Alyeska Resort Aerial Tramway is a four-minute ride bringing you to

rated the best view of any U.S. ski resort.

The tram operates two cars on a counterweight system -- as one car goes up the other car comes down. Maximum Speed : 26 miles per hour Average Time: winter - 4 minutes, summer - 8 minutes

Capacity: Each of the two cars holds a maximum of 60 persons.

800 persons per hour maximum Elevations Lower Tram Terminal: 306 feet

Glacier Tram Terminal: 2,334 Feet Vertical Rise: 2,025 Feet

After reaching the top of the tram, exclaiming "oooo" and "aaah" and taking a bunch of pictures, finally down the mountain we will ski!

Mt. Alyeska statistics:

Base Elevation: 250ft.

Summit Elevation: 3939ft

Vertical Drop: 2500ft.

Skiable Area: 1,400 acres

Annual Snowfall: 782in.

Longest Run: 10,560ft.

Lifts: Nine

Trails: 68

At the end of the ski day, many of us will be visiting the hot tub with a few homemade libations to plan our evening activities. The resort has many fine bars and restaurants around the premises. Additionally, we are next to the small town of Girdwood. Girdwood also has a few bars, shops and restaurants for Ibex to harass as well.

The hotel has a policy for waking those folks who wish to see the northern lights at night. They will call you to let you know the lights are in view. Many of us will be bringing our best cameras for just such an opportunity.

Saturday, March 1 is the start of the Iditarod dog sled races. Our bus will pick us up at 7:00 am for the trip to downtown Anchorage. The race

(Continued on page 7)



a viewing deck, which provides breath taking panoramic views of majestic mountains, hanging glaciers, sparkling streams, towering spruce, and an array of wild-life. Telescopes on the Glacier Terminal viewing deck intensify what *Conde Nast Traveler* magazine

# ALYESKA SKI ADVENTURE - CONTINUED

(Continued from page 6)

starts at 10:00 am with activities going on until 1:00 pm. So far 110 teams have entered this prestigious race. Each sled team consists of 12 to 16 dogs and their musher who must travel 1100 miles to Nome. The entire town is in party mode for the day and most of the evening so lbex will have no trouble fitting in and finding some trouble somewhere in town. Our bus will pick us up at 8:00 pm for travel back to our Hotel.

Numerous side trips abound in Alaska. Everyone is encouraged to tour the glaciers & scenic forests via boat, dog sled, snow mobile, bus and helicopter. Our flight home does not depart until 10:00 pm on Monday night, so we have available a full day of adventure before finally

sleeping on the red eye home arriving early Tuesday morning at O'Hare. -Ed



## Mt. Alyeska Trail Map

The upper half of the mountain is in the Department of Natural Resources land under special permit to Alyeska Resort.

## CASCADE/DEVIL'S HEAD -CONTINUED



(Continued from page 5)

be held at the Alakai, après ski Saturday. Yes, there will be sausage. I believe sausage is mandatory in Wisconsin.

Ibex ski and snowboard lessons are included. Video analysis will be available. Lesson registration will be taken at trip sign up and January 16 is the last day to sign up for lessons. The Midwest Trip is a great opportunity to practice for your Western trips, party with your Ibex buddies, and introduce friends to the club. Bring the family along and teach the

Little Goats the Ibex ways.

The Alakai is located off Exit 92, Route 12, in the Dells. Denny's, Steak & Shake, Paul Bunyan's and many other places are close by for breakfast and there are tons other of restaurants within a couple miles. For more information contact [cas-cadedh@skiibex.com](mailto:cas-cadedh@skiibex.com)

I guarantee you will have a good time on this trip.

-Jean Bagel

## SKI GAMES

### F or Children and Children at heart

As our club keeps changing with the addition of children, many of our children want to follow in their parent's footsteps, and learn to Ski and/or Snowboard (this is a good thing).

As a child starts to ski they need to develop the proper skills that help them become a better skier than their parents (no bad habits – we all have a few). If we play skiing games during their development they will have fun and learn without them feeling the pressure of teaching. Most children learn by just seeing and doing – they do not need a detailed explanation. In the beginning do not use poles or try counter movement – keep it simple. Try some of the following games:

If you have a small softball you can have them carry it with both hands – *this will have them keep their hands in front*. Using the same ball, have them play basket ball. Have your child shoot a basket through your arms as you stand on the inside of their turns – *weight shift for rounder turns*. When they make a small turn, have them make a small single hop, like a bunny – *helps to find center balance*.

If you notice that your child is sitting back, tell them to pressure the front of their boots. This is easy, if you tell them that they have bubble wrap in the front of their boots and they need to pop the bubbles during their turns.

When you tell your child to follow you down the hill, give them a path to follow. You can be a train engine and they can be train car. Show them your ski tracks in the snow and tell them these are train tracks and they must stay on the tracks or the train will crash. This works much better than just saying follow me down the hill. When your child follows you without staying in the tracks they will cut the corner short and ski to you because you are in front and they want to stay close to you.

There are a lot of games that you can play with your children as your child develops the games change. You know your child; make up your own games.

Remember to teach safety, have fun and keep learning.

John Brandt  
Ibex Ski School  
PSIA Children's Accreditation



## JANUARY ACTIVITIES

Jan 5	Jersey Boys	Jean Bagel
Jan 6	Wilmot Local Ski/Board Day	Bob K
Jan 11	BOM: Bogie's Ale House	Mindy

### LOOKING AHEAD

March	Chili Cook-off	Joe Davis
-------	----------------	-----------

### BAR OF THE MONTH

#### Bogies Ale House

Friday, January 11<sup>th</sup>  
303 E. Kensington Rd.  
Mt. Prospect.

Another work week will be over and it's time to start celebrating the weekend! Come on out for some burgers; thin- and deep-dish pizzas; prime rib; potato skins and onion rings; ribs. We generally start arriving around 6-7, but you can get there early for half-price appetizers from 2-5 p.m.

-Mindy

## NEW IBEX WEB SITE!

Please check out our new and improved website. **Cindy McElligott** has done a spectacular job updating and modernizing it. This is the place

to go to for the latest news on activities and events. Even more improvements are planned for the future so keep coming back often. -Ed

### NEW E-MAIL ADDRESSES FOR IBEX

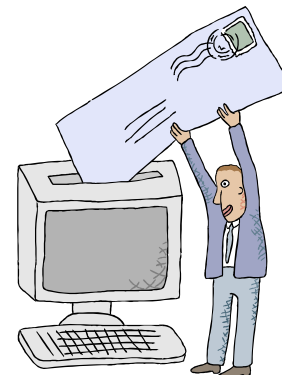
Ibex Newsletter 2007	<a href="mailto:IbexNewsletter2007@Skilbex.com">IbexNewsletter2007@Skilbex.com</a>
Ibex Trips 2007	<a href="mailto:IbexTrips2007@Skilbex.com">IbexTrips2007@Skilbex.com</a>
Ibex BOD 2007	<a href="mailto:IbexBOD2007@Skilbex.com">IbexBOD2007@Skilbex.com</a>
Ibex President 2007	<a href="mailto:IbexPresident2007@Skilbex.com">IbexPresident2007@Skilbex.com</a>
Ibex Membership 2007	<a href="mailto:IbexMembership2007@Skilbex.com">IbexMembership2007@Skilbex.com</a>
Ibex Racing 2007	<a href="mailto:IbexRacing2007@Skilbex.com">IbexRacing2007@Skilbex.com</a>
Ibex Scuba 2007	<a href="mailto:IbexScuba2007@Skilbex.com">IbexScuba2007@Skilbex.com</a>
Ibex Ski School 2007	<a href="mailto:IbexSkiSchool2007@Skilbex.com">IbexSkiSchool2007@Skilbex.com</a>
Ibex Treasurer 2007	<a href="mailto:IbexTreasurer2007@Skilbex.com">IbexTreasurer2007@Skilbex.com</a>
Ibex Web 2007	<a href="mailto:IbexWeb2007@Skilbex.com">IbexWeb2007@Skilbex.com</a>
Ibex Activities 2007	<a href="mailto:IbexActivities2007@Skilbex.com">IbexActivities2007@Skilbex.com</a>



**BOM**  
Bar of the  
Month  
**Bogies**  
**Ale House**  
Friday  
January 11th

"THE place to  
go for the  
latest IBEX  
news"

[skiibex.com](http://skiibex.com)



## EXECUTIVE BOARD MEMBERS

### President

Craig Moon (630) 579-8670

### Trip Chairperson

Sarah Schmeichel (847) 496-7457

Assistant Pam Arnold

(847) 358-1504

### Membership Chairperson

Doris Hoffie (847) 202-5676

### Activities Chairperson

Mindy Parry (847) 309-0214

### Secretary

Ed Fee (847) 496-7457

### Treasurer

Lou DiFrancisco (847) 341-4583

Assistant Joe Davis

(847) 985-1699

**When life bring changes...**

**Help us keep our records up to date.**

**When your information changes please fill out this form and bring it to a meeting, or mail your new information to:**

[lbexMembership2007@Skilbex.com](mailto:lbexMembership2007@Skilbex.com)

Name: \_\_\_\_\_

Street: \_\_\_\_\_

City, State, Zip: \_\_\_\_\_

Home Phone: \_\_\_\_\_

Work Phone: \_\_\_\_\_

Cell Phone: \_\_\_\_\_

## 2007-08 MEMBERSHIP RATES

	E-Mail	Paper
Single	\$ 20.00	\$ 35.00
Couple/Family	\$ 35.00	\$ 50.00

**CHECK OUT THE IBEX WEBSITE!**

[WWW.SKILBEX.COM](http://WWW.SKILBEX.COM)

**E-MAIL:** [lbexMembership2007@Skilbex.com](mailto:lbexMembership2007@Skilbex.com)

### One liners...

- Police Station toilet stolen....Cops have nothing to go on.
- Schizophrenia beats being alone.
- If at first you don't succeed, redefine success.
- You have the capacity to learn from your mistakes. You will learn a lot today.
- A thing not worth doing isn't worth doing well.
- Hard work never killed anyone, but why chance it?
- I don't have a solution, but I do admire the problem.
- I think sex is better than logic, but I can't prove it.
- The meek shall inherit the earth.....after we're through with it.
- If a thing is worth doing, it would have been done already.
- Lord, if I can't be skinny, please let all my friends be fat.
- Good health is merely the slowest possible rate at which one can die
- Confession is good for the soul, but bad for your career.
- Sometimes too much to drink isn't enough.
- It's hard to make a comeback when you haven't been anywhere.
- A closed mouth gathers no foot.
- Money isn't everything, but it sure keeps the kids in touch.
- Losing a husband can be hard. In my case it was almost impossible.
- My Wild Oats Have turned to Shredded Wheat!
- Is reading in the bathroom considered multi-tasking?



## PARTING SHOTS