



# THE OLDE GOAT

## Ibex Ski & Snowboard Club

Meets the first and third Wednesday of each month at:

**Crave**

1204 W. Rand Road  
Arlington Heights, IL

VOL. XLIV NO. IX

January 2007

November Meetings  
Wednesday, Jan 3  
Wednesday, Jan 17

Location: Crave  
1204 W. Rand Road  
Arlington Heights, IL

Brews 'N Schmooze Hour: 7:00PM  
Meeting Time: 8:00 PM Promptly



## ALMOST FULL

*The 2007 Spring Ski Trip with CSMC has only seven spots available.*

The trip departs Saturday March 24, 2007, return Saturday March 31, 2007.

We haven't been to Sun Valley for several years, the spring trip promises to be a great one. Anyone that does not want to ski everyday can exchange their lift ticket for other services and deals in the valley.

Over 300 Chicago club members will join us at this destination resort for a week of skiing, a few parties and some racing.

Hope to see you in Sun Valley this March.

Sign up quickly as we will have to drop spots soon.



Call Craig Moon @ 630-269-8660 for more information.

Thanks,  
**Craig**

## In This Issue

SunValley	1
Ibex Trips	2
Activities	3
Payment Schedule	3
Moon's Mussions	4
Cortina	4
SunNut	4
Ibex Clinics	5
Chicago Indoor Racing	5
Membership	6
Scuba News	6
Get to Know Us Party	7



# TRIPS

**TRIP SPOTS:** By the time you read this, we will have returned from the New Year's extravaganza in Big Mountain, MT. Thanks to everyone for a great time and especially a big thank you to your Trip Leader, Jean Bagel and your Assistant Trip Leader, Patty Blades. If you are still looking for a trip, we can still accommodate some skiers. There still are openings on Sun Valley and our Midwest trip to Chestnut/ Sundown. There is limited availability on Cortina (Italy), Crested Butte – call me directly if you are interested in those two. For trip details, check the ibex website at [www.skiibex.com](http://www.skiibex.com).

**TRIP PAYMENTS:** Check the payment schedule elsewhere in the newsletter for upcoming payments. Please bring your payments to the next meeting or mail them in to Ibex Ski Club, PO Box 1542, Palatine IL 60078

**TRIP SURVEY/ FEEDBACK FORMS:** Get ready for 2008. If the trip destinations were not what you desired for 2007, then be ready to tell us in the Trip Survey. We should have that published by the beginning of April. Also, if you are on a trip with Ibex, then please take the time to fill out the Trip Feedback Form. This is how we know what works and what doesn't, so it's very important to the future of the club. Thanks for your input.

**CORTINA PRICE INCREASE:** In the Ibex trip policy, it states that unexpected price increases will be passed on to the trip participants. That situation has arisen on the Cortina trip with an unexpected increase in fuel surcharges. Cortina participants will need to pay \$70 more. I am sorry to do this, but the club is not-for-profit and we price the trips to break even. When some unexpected charges come along, we must ask that trip's members to pay more.

Please send your \$70 per person check made out to Ibex Ski & Snowboard Club to the Ibex mailbox at P.O. Box 1542, Palatine, IL 60078, or bring it to the next meeting. Thanks for your understanding.

*Patrice Conaway*

*ibextrips@skiibex.com*



## TRIPS 2007

**NEW YEARS - BIG MOUNTAIN, MONTANA** \$999 taking WAITLISTS  
WED 12-27-06 through MON 1-1-07 Grouse Mountain Lodge hotel, 3 days Lift, .  
AIR: Northwest thru MSP to Kalispell: OUT 6PM 10:53PM/ RETURN 8:50AM 2:31PM

**CORTINA d'AMPEZZO ITALY** \$1500  
w/ 4 DAY, 3 NIGHT EXTENSION to FLORENCE \$1835  
FRI 1-19 through SAT 1-27 Parc Victoria hotel, Ground Transfers, Breakfast & Dinner daily / AIR: Lufthansa thru MUC to Venice: OUT 4:35PM 12:20PM/ RETURN 9AM/ 2PM. EXTENSION: SAT 1-27 through TUE 1-30 Hotel Cavour in Florence, 1/2 day guided city tour, breakfast daily

**MIDWEST: SUNDOWN & CHESTNUT** \$180  
FRI 2-09 through SUN 2-11 0-1 vacation days needed  
DRIVE trip to Iowa  
Two nights Holiday Inn Dubuque, 2 days Lift, Buffet Breakfast, Pizza party

**CRESTED BUTTE, CO — Limited Availability** \$1030  
THU 2-22 through TUE 2-27 Grand Lodge hotel, 4 days Lift, Ground Transfers, Breakfast  
AIR: AMERICAN thru DFW to Gunnison: OUT 8:30A 1:16P/ RETURN 2:05P 8:23P

**SPRING in SUN VALLEY, IDAHO** \$1335  
SAT 3-24 through SAT 3-31 In conjunction with Chicago Metro Ski Council—  
CMSC CHICAGO WEEK Lodge Apt Condos, 6 days Lift, Ground Transfers, Rac-  
ing, MANY social events. AIR on ALASKA thru SEA to BOISE: OUT 8:15A 4:55P/  
RETURN 9:30A 4:59P

# January Events

## Welcome Ski Season!!!

January 3  
January 12

Games night, 6:30  
BOM

Mark Westlund  
The Onion Pub & Brewery

### Upcoming Events

February 2  
February 7  
February 17  
March

BOM  
Games night, 6:30  
CHICAGO INDOOR RACING  
Chili Cookoff

TBD  
Mark Westlund  
Mark Westlund  
Joe Davis

### The Onion Pub and Brewery, Friday January 12, Bar of the Month

22221 Pepper Road in Lake Barrington, <http://onionpub.com/index.aspx>

So everytime we get together to discuss activities and good bars to visit, "The Onion Place" comes up, so here we go!!! I am excited to see what all the fuss is about, and here is what they have to say about themselves....

"Our pub is a spacious restaurant and bar with a relaxing comforting feel of an Olde English style pub. Set on a beautiful renovated property in Lake Barrington, our state-of-the-art facility brews our beer and filters it right to the taps in our main bar. Where you can cozy up with a loved one aside our centralized stone fireplace, join some friends for some drinks at the bar, or enjoy an afternoon on our patio overlooking our restored lake and landscape."

They have live music every Friday featuring "The Fluffers"!!??? They have about a dozen fresh brews and lots of good food on the menu, so come out and join the group around 6:30 or whenever you can make it!!

## Christmas Party!!!!

"HO!HO!HO! Merry Christmas!!!" Santa said as he exited our awesome Christmas Party December 6<sup>th</sup>! A great crowd of 50 strong came out to enjoy our Christmas celebration! The evening was kicked off around 6:30 with Texas Hold'em, a little Yukor and a lot of socializing! We enjoyed appetizers and pizza and some of us brought desserts to share, yummy!! We had a short meeting to highlight current events and upcoming trips, followed by a visit from Santa, who had treats for kids of all ages!

Thanks to everyone who came out!! Thanks to Santa, whose mere presence completes the celebrations!! Thanks to all who brought a dessert to share!! It was great to see everyone out and having a good time!!

## Mindy

*IbexActivities@SkiIbex.com*

IBEX SKI & SNOWBOARD CLUB										
2007 TRIP PAYMENT SCHEDULE										
	BIG MOUNTAIN		CORTINA		SUN NUT IOWA		CRESTED BUTTE		SUN VALLEY	
	Amount	Date due	Amount	Date due	Amount	Date due	Amount	Date due	Amount	Date due
payment 1	\$ 100	7/29/2006	\$ 100	7/29/2006	\$ 50	7/29/2006	\$ 100	7/29/2006	\$ 100	7/29/2006
payment 2	\$ 300	9/20/2006	\$ 450	9/20/2006	\$ 130	1/3/2007	\$ 350	11/1/2006	\$ 400	11/1/2006
payment 3	\$ 300	11/1/2006	\$ 450	10/18/2006			\$ 350	12/20/2006	\$ 400	1/3/2007
payment 4	\$ 299	12/6/2006	\$ 500	11/1/2006			\$ 230	1/17/2007	\$ 435	2/21/2007
payment 5 - optional for Florence extension			\$ 335	12/20/2006						
payment 6 - fuel surcharge increase			\$ 70							
			\$ 1,570	w/o extension						
total	\$ 999		\$ 1,905	w/ extension	\$ 180		\$ 1,030		\$ 1,335	

# Moons Musing

The Bears pulled it out with an overtime win this afternoon, clinching Home Field Advantage through out the playoffs. Why do the Chicago teams make it so hard on their fans???

Mike, Karen and Carl joined me at the Country House Restaurant throwing peanuts on the floor, watching the Bears eek out a win. Last night Janine and Mark hosted their annual holiday party where Jackson Cynthia (CJ) and Dan Casey announced their engagement, job change and a move to Atlanta. Talk about a life style change. We wish them the best of luck.

The only reason I bring these things up in a newsletter article is to think and reflect on the true friends we have in the ski club. As the world becomes a much busier place, I think the friendships made within the club allow all of us to have a much better quality of life. By the time this newsletter is read, the first ski trip of the year will have been completed. Hopefully there will be no member visits to a hospital or jail.

The Holiday Party meeting was a huge success with over 40 Ibex and new members in attendance. Thanks to Mindy for her efforts to make the night a success.

Hope to see everyone a meeting, activity, or trip soon. Hope the Holidays were everything you wished for.....Happy New Year to all!!!!

*Craig*



## *Buon giorno tutti!*

There are still two spots remaining on the Cortina trip. So if you've been on the fence – get off it and go to Italy with 22 cool people! We leave from O'Hare on Lufthansa Friday, January 19 in the afternoon. If you go just to Cortina you will only need to take five days vacation from work!



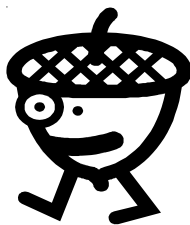
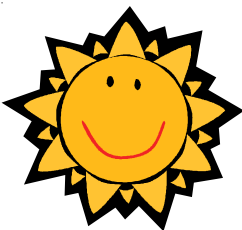
Total cost is \$1,500 for Cortina only, which includes airfare, ground transport, lodging, vino e fromaggio party (wine & cheese – start getting used to the Italiano!), breakfast and dinner everyday. With the Florence extension it is \$1,835 and that includes ground transport, breakfast everyday and lodging.

I am currently working on getting some good side trips together that include but are not limited to Venice, Innsbruck, and the Sella Ronda (skiing around 5 mountains – way cool!). In Cortina you can sledge (Cliff Low the Sledge King will be there to provide expert instruction), bobsled, cross-country skiing and a lot of other good stuff. Mike P. has graciously offered to help me host the pub crawl. Since Ed and I were there just three years ago, we know some good spots to start drinking the vino!

I will send airline information (i.e., how many bags, weight, etc.) and other pertinent information to those who have signed up for the trip in the next couple of weeks.

*Buona Natale!*

*Sarah*



## REMINDER

Payments are due 1/03/07!!!!!! The Midwest Trip is scheduled for Feb 9-11<sup>th</sup> to Sundown/Chestnut Mountains. **TIME TO COMMIT!!!!** I need to know who is going as I have to order lift tickets, arrange roommates, and would like to distribute trip packets by mid Jan. Adult price is \$180 (based on 2 adults per room); kids 6-12 ys \$65; kids 13+ ys \$70. Will be a great time of year to get away for a short weekend, practice ski/snowboard skills, and well..... just HAVE FUN!!! Any questions, please contact me at (847) 359-4806 or catch me at a meeting.

*Sue Linzing*

## Reminder

# IBEX Skiing and Snowboard Clinics

This year we are running clinics at Wilmot on the Wednesdays opposite of meetings. It is FREE for all IBEX members. The group(s) will dictate the level of the clinic. On request we will be able to video tape parts of clinics and review the footage. The dates below are subject to change due to snow and weather conditions. Please RSVP by emailing [skischool@ibex.com](mailto:skischool@ibex.com).

December 30<sup>th</sup> - Focusing on getting back on skis (Also Family Night)

January 10<sup>th</sup> - Balance and Stance

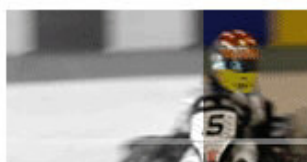
January 24 - Ice skiing or Wilmot Powder

February 14<sup>th</sup> - Racing

February 28<sup>th</sup> - You Call it

## Bill

[IbexSkiSchool@SkiIbex.com](mailto:IbexSkiSchool@SkiIbex.com)



**CHICAGO**  
INDOOR RACING

Join IBEX as we challenge another ski club for  
a fun night of Chicago Indoor Racing

Experience  
the adrenaline rush

At 3:00pm on Feb 17th, with dinner and drinks immediately following. Each person will participate in three races. From these races we will determine the top racers from each club team and then race off. The Racing will cost \$80.00 per person, which does not include dinner and drinks afterwards. The event will be limited to 15 person per club, so sign up early and often.

*The Grand Prix format gives everyone an opportunity to experience a competition.*

Each guest will experience the following:

A Pre-Race Driver's Meeting featuring private detailed instruction on the track, the karts, and safety information.

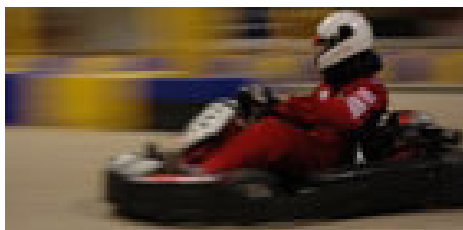
- \* Three Heat races, starting from different grid positions.
- \* Points will be awarded based on finishing position in each heat.

\* The top 4 to 5 Drivers per club will progress to the Final Championship Race, with grid order being determined by the points scored during the heats.

For directions and any additional information: <http://www.chicagoindoorracing.com>

**Mark Westlund**

(847) 998- 1495



**HO!HO!HO!**  
*Santa visits Ibex!*

# Are You Ready to Party?

## The "Get To Know Us" Party is Almost Here

The "Get to Know Us" Party (the party formerly known as the New Members Party) is coming. See the insert in this newsletter for the details. But here are just a few tidbits of information:

- Date:** January 13, 2007  
**Time:** starts at 3 pm  
ends at ??  
(skiing from 3:30-11 pm)  
**Place:** Wilmot Mountain  
(party will be in the Iron Kettle)  
**Activities:** Skiing and snowboarding  
(at a small cost)  
Lessons (free, but register  
in advance if possible)  
Party  
(free food, beer, soft drinks)

The party is great way to introduce new people to the club. Make copies of the insert to pass out to friends and/or to post at your work, gym, ski shop ,etc.

**Volunteers needed:** We are also looking for volunteers to help. Each shift will last for only 35 minutes (2:45-3:20 [2 people], 3:15-3:50 [2 people], 3:45-4:20, 4:15-4:50, 4:45 to 5:20, 5:15-5:50). See me at one of the meetings (up thru January 6) or contact me via phone (847.847.2202) or e-mail.

### Membership for 2006-2007

(thru November):

152

### January birthday wishes to:

Chuck Lemke	01
Bill West	01
Jacqueline Wodach	01
Mark Westlund	03
Dennis Baren	06
Regina Bramblett	06
Greg Kujawinski	08
Carolyn Lepsi	11
Mary Harder	14
Barbara Peterson	22
Chuck Binzel	30

**Dave**

*IbexMembership@skiIbex.com*

# Scuba News

## **BELIZE – March 17 to 25**

Spend a week diving Lighthouse & Turneffe Reefs from the floating hotel. The Nekton is known for no seasickness.

## **LITTLE CAYMAN – April 28 to May 5 ???**

Bloody Bay Wall has some of the best diving I have ever done. The hotel food is unbelievably good.

## **BONAIRE – November ????**

Bonaire has excellent, easy diving.

**Cindy Warta**

847-394-8805 *IbexScuba@SkiIbex.com*

## IBEX on the WEB

### **www.SkiIbex.com**

*IbexPresident@SkiIbex.com*

*IbexActivities@SkiIbex.com*

*IbexMembership@SkiIbex.com*

*IbexNewsletter@SkiIbex.com*

*Big@skiibex.com*

*Cortina@skiibex.com*

*Chestnut@skiibex.com*

*Crested@skiibex.com*

*SunValley@skiibex.com*

*IbexRacing@SkiIbex.com*

*IbexSkiSchool@SkiIbex.com*

*IbexTrips@SkiIbex.com*

*IbexWeb@SkiIbex.com*



**Guess who turned 40!**



# Ibex

## Ski & Snowboard Club

### “Get To Know Us” Ski & Board Party

Please join Ibex for a night of skiing, boarding, food and fun. Learn about the club and make some new friends. This event is open to anyone – adults and accompanied kids – who likes to ski or snowboard (or anyone who would like to learn).

**When:** Saturday, January 13, 2007, starting at 3 p.m.

**Where:** Wilmot Mountain

(located just north of the Illinois/Wisconsin border, 13 miles west of Interstate 94, on Hwy C and Wilmot Rd.)

**Lift tickets:** \$20 (tickets are good from 3:30 to 11 pm)

**Rentals:** \$10 for skis, \$20 for snowboards

**Lessons:** Free (from PSIA-certified ski instructors from either the Ibex Ski School or from Wilmot Mountain)

**Party:** Free (*come join us even if you don't want to ski or board*)

Besides the on-slope fun, Ibex will be having a party with free food and raffle prizes. Also learn about the club and its many activities, including our upcoming trips for the rest of the season:

*European Trip to Cortina, Italy* (Jan. 19-27 or 30)

*Sundown/Chestnut weekend trip* (Feb. 9-11)

*Crested Butte, Colorado* (Feb. 22-27)

*Spring Skiing in Sun Valley, Idaho* (Mar. 24-31)

### Special bonus incentive: Ski Free!

If you join Ibex during the party, you get to ski free! (For couple and family memberships, two persons ski free.) Yearly membership start at \$20 for singles, \$35 for couples and families. And members who bring someone who joins get to ski for half price.

To guarantee space in a lesson, please let us know by Wednesday, January 10, by phone (847-638-2202) or e-mail (Membership@SkiIbex.com). After Wednesday, lessons will be offered on space available basis.

*Besides skiing and snowboarding, Ibex is a year-round sports and social club that facilitates biking, camping, golfing, scuba diving, volleyball and other sporting and social activities.*

**For more info, visit [www.skiibex.com](http://www.skiibex.com)**

**EXECUTIVE BOARD MEMBERS**

**President**

Craig Moon (630) 579-8670

**Trip Chairperson**

Patrice Conaway (847) 749-1946

Assistant Sarah Schmeichel (847) 592-7263

**Membership Chairman**

David Toy (847) 638-2202

**Activities Chairwoman**

Mindy Parry (847) 309-0214

**Secretary**

Ed Bendickson (847) 223-2871

Assistant Diana Clarke (847) 255-8155

**Treasurer**

Lou DiFrancisco (847) 341-4583

Assistant Joe Davis (847) 985-1699

Thank you for your help with this mailer:

Cindy, David, Patty, Mindy, Patrice, Mark, Bob  
Michelle, Joe, Sarah, Bill, Craig, Paul, Jean, Diana, Sue

**Ed Bendickson**

Secretary [IbexNewsletter@Skilbex.com](mailto:IbexNewsletter@Skilbex.com)

**When life brings changes ...**

Help us keep our records up to date. When life brings changes to your life, please fill out this form and either bring it to a meeting or mail it to:

**Membership Chairman Ibex Ski & Snowboard Club  
P.O. Box 1542, Palatine, IL 60078**

**Or e-mail the information to:**

[IbexMembership@Skilbex.com](mailto:IbexMembership@Skilbex.com)

Name: \_\_\_\_\_

Street address: \_\_\_\_\_

City, state, zip: \_\_\_\_\_

E-mail: \_\_\_\_\_

Home phone: \_\_\_\_\_

Work phone: \_\_\_\_\_

Cell phone: \_\_\_\_\_

**2006-07 Membership Rates**

	<b>E-mail</b>	<b>Paper</b>
Single	\$20	\$30
Couple/Family	\$35	\$45

**IBEX Ski & Snowboard Club**

**P.O. Box 1542**

**Palatine, IL 60078**

*First Class Mail*

*Check out the IBEX web site*

*[www.Skilbex.com](http://www.Skilbex.com)*

*Email: [IbexMembership@Skilbex.com](mailto:IbexMembership@Skilbex.com)*