



IBEX SKI & SNOWBOARD CLUB

THE OLDE GOAT



MEETS THE 1ST & 3RD WEDNESDAY OF EACH MONTH AT:
GRAVE
 1204 W. RAND RD. ARLINGTON HEIGHTS, IL.

DECEMBER 2007

MEETINGS

7:00PM BOOZE & SCHMOOZE

8:00PM MEETING

- > **DEC 5**
- > **DEC 19**

EVENTS

- > **CHRISTMAS PARTY
DEC 5TH**

HIGHLIGHTS THIS ISSUE:

Skiing Better	2
Scuba Trips	2
Moon's Musings	3
Fall Colors recap	3
Ski trip information	4

CASCADE & DEVIL'S HEAD

Hey, Ho, Let's Go! Sign-ups are in progress for the Premier Midwest Trip: Cascade and Devil's Head. Drive up trip. February 8-10, 2008. Deposits of \$50.00 per person will be taken at 12/5 meeting. Final payment of \$125.00 is due January 16, 2008. We need to let the hotel know how many rooms we need by then, so don't wait! Trip includes two nights lodging in the Wisconsin Dells, hotel rooms, double occupancy. Plus, there will be a complimentary wine and cheese party. Trip features all of this for the low cost of \$175.00 per adult (double occupancy).

Prices for children staying in room with two paid adults: <5= 0; 6-12= \$70.00; teen= \$120. The Alakai Hotel features in room microwave and refrigerator. There is an indoor hot tub and swimming pool, and a small water-park www.alakaihotel.com to view the amenities. There is complimentary coffee and coffee cake in the morning. Lift tickets are full day and night skiing. Saturday ski at Devil's Head www.devilsheadresort.com. Sunday ski at Cascade www.cascademountain.com.

The wine/beer and cheese party will be held at the Alakai, après ski Sat-

(Continued on page 2)

IBEX CHRISTMAS PARTY!

Christmas is closing in fast and it's time celebrate with your friends at Ibex! The Ibex Annual Christmas Party will be held at Crave on **Wednesday, December 5th**.

Party Information:

7PM Appetizers, social & game hour upstairs
8PM Pizza and meeting
Food...the club will provide pizza and appetizers for members
Desserts...Please feel free to bring a dessert to share with everyone, there will be a prize for best snack so bring an appetite too!
Attire...time to drag out the red and green, reindeer ears and Santa hats! Come dressed ready to get the holiday season underway!
Kids Welcome! Santa will be stopping in to spread some Holiday cheer!



I Am Not A Grinch!

-Mindy

“Ski and snowboard lessons are included ”

CASCADE AND DEVIL’S HEAD -CONTINUED

(Continued from page 1)

urday. Yes, there will be sausage. I believe sausage is mandatory in Wisconsin.

Ibex ski and snowboard lessons are included. Video analysis will be available. Lesson registration will be taken at trip sign up. January 16th is the last day to sign up for lessons.

The Midwest Trip is a great opportunity to practice for your Western

trips, party with your Ibex Buddies, and introduce friends to the club. Bring the family along and teach the Little Goats the Ibex ways.

The Alakai is located off Exit 92, Route 12, in the Dells. Denny’s, Steak & Shake, Paul Bunyan’s and many other places are close by for breakfast. Tons of restaurants are within a couple of miles. For more information contact

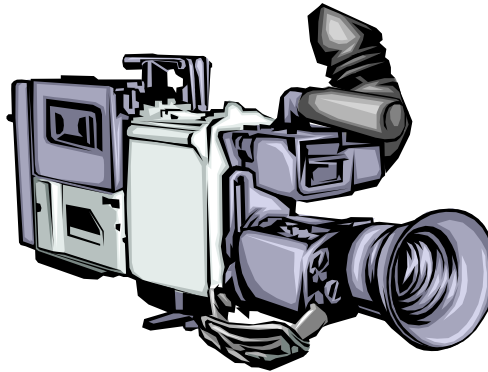
cascadedh@skiibex.com

SKIING BETTER



Is this Denny?

Have you ever wondered what the world would look like from someone else’s perspective? Well you can do that with a camcorder on the ski slope. This tool can provide immediate feedback on the hill or back at the hotel room. It can also monitor progress from hour to hour or lesson to lesson. Ibex Ski and Snowboard School will be providing



lessons with camcorders upon request this year and on our Midwest Trip. The Ibex instructors will be using it for all levels of lessons and at our clinics. So come on out and sign up for these lessons.

The bad thing is the camera doesn’t lie, yes

my butt is getting bigger.

-Bill

SCUBA DIVING TRIPS

We are planning numerous trips over the next year including:

**FEBRUARY 28 to MARCH 9
– ST. KITTS**

We are trying someplace new. Come and explore with us.

APRIL 24 to MAY 5 - CURACAO
Habitat Curacao has great diving

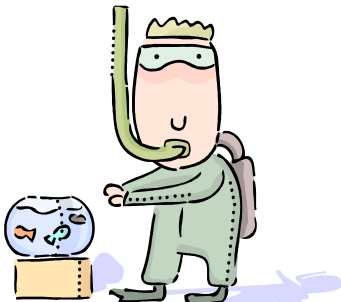
just minutes from the hotel.

MAY 27 to JUNE 9 - ALASKA

Come tour & cruise with us.

If you want to join us or require additional information please e-mail me at skiscuba2007@skiibex.com

-Cindy



MOONS MUSINGS

Guest comments by Curtis “Nasty Turns” Camden: long time member of Ibex who moved to Breckenridge in 1986 to follow the dream of ski bum and part time house painter during the off season.

After finding the club was joining CMSC this spring for the “Spring Break” ski trip, I contacted Craig Moon, an old friend and ski pal from way back to get the information on the trip. Unfortunately, I found out our president and friend was under some rain clouds. He really wasn’t up to writing a column this month so I offered to help-- plus, get a chance to re-establish some old friendships in the club. As long as I have the floor (page?) how are Denny Gawlik, Jo Ann Kovich and Cliff Low doing? I really should get back for one of Denny’s picnics during the summer. Anyway, I digress, Craig

has been snake bit by the cancer bug and is working with the finest medical team at Edwards Hospital to arrest the spread and join us this winter.

So far his chemo treatments are producing very positive results to that end but he told me there are several more treatments’ down the mountain. He also asked me to pass on his thanks and appreciation for all the cards, thoughts, prayers and visits during the last month. The support from friends is truly humbling and furthers the reasons he will be with us in Alaska and Breck! Hey, I gotta run. We are getting snow finally, the mountain may open on Saturday, gotta get my turns before March. Can’t let my flatlander friends out ski me! Before I strap em on, let me wish everyone at Ibex a very Merry Christmas and a Happy New Year.

-Nasty Turns



“...Chemo treatments are producing very positive results...”

FALL COLORS -RECAP

Friday, September 28th, 14 club members and guests left the warm and sunny confines of Chicago and the surrounding collar counties for the land of red beer, cheese, The Packers and three days of golf. Upon arriving at the Ridges course around noon on Friday, thinking about lunch, maybe a adult refreshment and a few practice swings.

The first thing, the lunch room did not open until 4pm but they had hot dogs, chips and a drink for \$3.50 in the clubhouse. The Pro Shop was very easy to work with so we were ready to “T” off @ 1:00pm. We were just missing two members that missed a turn or construction slowed them down so we just

moved carts around to accommodate them. The weather on Friday was beautiful for golf, course in great shape and the back nine were tighter than a liar’s wallet.

The exciting part of the afternoon was averted when Lou was able to keep his cart from slipping into a pond while looking for his ball. I guess he forgot I still have plenty of Whirlpool golf balls left!

Hotel Mead is a new venue for our Ibex Fall Colors golf outing. After check-in and cleanup, we headed down to the Tavern Grill to hook up with other members of the club that did not golf. After watching the Cubs pull out a win on the road, we headed to dinner.

(Continued on page 6)



2008 TRIP PAYMENT SCHEDULE

Payment	SALT LAKE		LAKE TAHOE		CASCADE/ DEVIL'S HEAD		ALYESKA		BRECKENRIDGE	
	Amount	Date due	Amount	Date due	Amount	Date due	Amount	Date due	Amount	Date due
1	\$ 100	9/5/07	\$ 100	9/5/07	\$ 50	9/5/07	\$ 100	9/5/07	\$ 100	9/5/07
2	\$ 300	9/19/07	\$ 450	9/19/07	\$ 125	1/16/08	\$ 350	10/3/07	\$ 350	10/17/07
3	\$ 300	10/17/07	\$ 450	11/7/07			\$ 350	11/21/07	\$ 350	12/5/07
4	\$ 363	11/21/07	\$ 286	12/19/07			\$ 346	1/2/08	\$ 336	1/16/08
total	\$ 1,063		\$ 1,286		\$ 175		\$ 1,146		\$ 1,136	

2008 SKI TRIPS

Mail payments to:

**Ibex Ski Club
PO Box 1542
Palatine, IL. 60078**

Fantastic Ski Trip Summary:

Salt Lake City:
12/27/07 to 1/1/08

Lake Tahoe:
12/26 to 2/2

Cascade/Devil's:
2/8/ to 2/10

Alyeska:
2/27 to 3/3

Breckenridge:
3/29 to 4/5

We still have spots available on Lake Tahoe, Cascade/Devil's Head and Breckenridge run by, Mike and Carolyn Lepsi, Jean Bagel and Carolyn Lepsi, Jean Bagel and Craig Moon/Lou DiFrancisco respectively. We have one spot left for Alyeska. Contact trip leader, Ed Fee, for more details. For Salt Lake City? Well, there's a slim chance we can get you in, but you'd better hurry. Contact Janine Westlund or me as soon as humanly possible. Check out Jean's interpretation of a

cheese (and hopefully) snow-filled ski weekend in Wisconsin. Please note the various pricing scenarios if you plan to take any kids under 12. The Trip Payment Schedule right above this article. Please take note of when your payments are due and please be prompt in mailing your checks to the P.O. Box or bringing them to the meeting. Contact your respective trip leader/s or me for any additional information.

-Sarah

LAKE TAHOE SKI TRIP

Come join Ibex for fun and sun for a week at beautiful Lake Tahoe. We will be flying American Airlines non-stop to Reno with a short bus ride to Tahoe. We will be staying in 2 bedroom condos, which is walkable to Heavenly gondola and Heavenly village.

TOP TEN LAKE TAHOE LIST:

10. Welcome reception at day of arrival.
9. Ibex Activities
8. Nightly entertainment, shopping and dining walkable from condo.

7. Lake Tahoe casinos 3 blocks away.

6. Pub crawl and group dinner.

5. Dinner cruise on Lake Tahoe after the Squaw Valley Day

4. 1 day at Kirkwood.

3. 1 day at Squaw Valley.

2. 3 days of skiing at Heavenly.

1. Fun in Tahoe with your Ibex friends, **priceless.**

There are still spots available and the cost is \$1286.00 for the 7 day trip. Jan 25 through Feb 2. Please come see us for information and sign ups..

-Mike and Carolyn Lepsi

ALYESKA SKI TRIP

We still have **ONE spot left open!** Please contact Ed Fee or Mickie Polk ASAP to secure your spot on this exciting ski trip adventure. We are leaving O'Hare **Wednesday night, Feb. 27** on a direct flight to Anchorage. Then a short 45 minute ride to our hotel; the Alyeska Resort. You will be able to ski all day Thursday through all day Monday as our flight on Monday does not leave until around 10:00 pm arriving Tuesday morning in Chicago.

However, **Saturday, March 1st is the start of the Iditarod dog sled races.** It starts in downtown Anchorage. Each sled team consists of 12 to 16 dogs and their musher who must travel 1150 miles to Nome. We will be taking a bus to see the start of the race. Another nice feature of this trip is, if you sign up, the hotel will wake folks up to view the northern lights at night. They are reportedly spectacular up in that part of the world.

-Ed



SALT LAKE CITY SKI TRIP

So far we have 26 (confirmed) people ready to kick off the New Year Ibex Style! Although signups should technically be 'closed', if you know anyone who is still "on the fence" about joining us on this trip, we'll never say never --- just give them the "Humpty Dumpty" treatment and get them moving and we'll do what we can to get them to join us! They can reach me at salt-lake@skiibex.com.

To help get you "in the mood":

Brighton has a 10" base already with two lifts and five runs open! Solitude has a 12" base with three lifts and four runs open! Snowbird and Alta are on target to open Nov 30th. Okay, so it's not all 'natural' snow --- but we've got another month to go! Thank-Snow!-Think-Snow!-Think-Snow!!By the time you get the next newsletter, this trip will be a fond memory. So until then, I wish you a **Safe Happy Holiday Season!** (and Think Snow!) -Janine

BRECKENRIDGE SKI TRIP

Late spring in Colorado with about 450 of your closest CMSC ski friends..sound like a great time to me. The cost is \$ 1,136.00 that includes six days of lifts for Breckenridge and Vail.

We will depart Saturday, March 29 returning Saturday April 5th. Lodging is Beaver Run at the base of chair nine.

The air has not been set but the airline will be either American or United.

The open day is Wednesday, so we will have the group dinner on the 2nd.

We have plenty of spots, so sign up with your friends.

Call me @ 847-301-1025 for more information. -Lou

Fantastic Ski Trip E-Mail Addresses:

Salt Lake City:

Janine Westlund

saltlake@skiibex.com

Lake Tahoe:

Mike & Carolyn Lepsi

tahoe@skiibex.com

Cascade/Devil's:

Jean Bagel

cascaded@skiibex.com

Alyeska:

Ed Fee & Mickie Polk

alyeska@skiibex.com

Breckenridge:

Craig Moon &

Lou DiFrancisco

breck@skiibex.com



FALL COLORS -RECAP



“...solved the world’s problems while consuming the keg until 4am!”



(Continued from page 3)

Golf on Saturday morning was a short drive to Arrowhead Golf course for scrambles golf. It was a bit cooler and rainy but a little weather cannot stop lbex. We have played golf in snow before! The weather provided the pro shop to pick up a few warm weather clothing sales. After rounds, everyone gathered for a few beers catching up on the college games and the Cubs score.

Dinner was set up in a private room at the hotel. They served Prime Rib, Chicken and Salmon with all the fixings plus a keg of red beer! Everyone agreed dinner was exceptional and the beer was cold. We were able to keep the room until the next morning so Lou, Mike and a few others took advantage and solved the world problems while consuming the keg until 4am!

Sunday, back to Arrowhead to play the third course of the weekend. Low score for male and female would determine the “Winner”. The course rangers were a little tighter on Sunday and I proceeded to hit Lynne in the leg with a chip shot. Either it was a lot harder than I thought or she bruises easily! Both days low scores were figured by tie breakers.

The awards for the weekend are as follows:

Saturday:

Low score tie breaker
 Low Score Team Winners: Lou Di-Francisco, Wayne Wodach, Peggy McLain, Maureen Geisler
 Carl Berg, Rosalie Licavoli, Hank Kyas, Lisa Spiegel

Long Drive Men – Barry Wood

Long Drive Women – Jacquie Wodach
 Closest to Pin Men – Jeff Smith
 Closest to Pin Women – Marilyn Raidy
 Long Putt Men – Jeff Smith
 Long Putt Women – Maureen Geisler

Sunday:

Low Score Men: Dan Casey (86)
 Low Score Women: Marjorie Krizizke (105) (tie breaker between Marjorie and Jacquie Wodach)
 Long Drive Men – None
 Long Drive Women – Jacquie Wodach
 Closest to Pin Men – Dan Casey
 Closest to Pin Women – Maureen Geisler
 Long Putt Men – Greg Kujawinski
 Long Putt Women – Marjorie Krizizke

A special “Thank You” to Maureen Geisler for providing the Wilson rescue clubs as low score prizes. As a final thought, while this year’s location was several miles further north, we did have 30 participants with several past regulars having other commitments. I felt the courses and hotel were great and would be willing to book there again.

Please remember that it is your outing too and please let me know what your thoughts are about the ‘08 Fall Color’s outing including location and price options.

Thanks again for being a great group as always and I will catch up with all of you this winter. Don’t forget the lbex Christmas Party this month!

-Craig Moon
 -Greg Kujawinski



DECEMBER ACTIVITIES

Dec 5 Ibx Christmas Party Mindy

LOOKING AHEAD

Jan 5	<i>Jersey Boys</i>	Jean Bagel
Jan 6	Wilmot Skistravagazna	Bob K
Jan 11	BOM: Bogie's Ale House	Mindy



BAR OF THE MONTH

Bogies Ale House

Friday, January 11th
303 E. Kensington Rd.
Mt. Prospect.



BOM
Bar of the
Month
Bogies
Ale House
Friday
January 11th

Another work week will be over and it's time to start celebrating the weekend! Come on out for some burgers; thin- and deep-dish pizzas; prime rib; potato skins and onion rings; ribs. We generally start arriving around 6-7, but you can get there early for half-price appetizers from 2-5 p.m.

-Mindy

"THE place to
go for the
latest IBEX
news"

skiibex.com

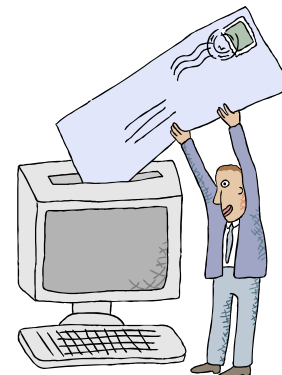
NEW IBEX WEB SITE!

Please check out our new and improved website. **Cindy McElligott** has done a spectacular job updating and modernizing it. This is the place

to go to for the latest news on activities and events. Even more improvements are planned for the future so keep coming back often. -Ed

NEW E-MAIL ADDRESSES FOR IBEX

Ibx Newsletter 2007	IbxNewsletter2007@Skilbex.com
Ibx Trips 2007	IbxTrips2007@Skilbex.com
Ibx BOD 2007	IbxBOD2007@Skilbex.com
Ibx President 2007	IbxPresident2007@Skilbex.com
Ibx Membership 2007	IbxMembership2007@Skilbex.com
Ibx Racing 2007	IbxRacing2007@Skilbex.com
Ibx Scuba 2007	IbxScuba2007@Skilbex.com
Ibx Ski School 2007	IbxSkiSchool2007@Skilbex.com
Ibx Treasurer 2007	IbxTreasurer2007@Skilbex.com
Ibx Web 2007	IbxWeb2007@Skilbex.com
Ibx Activities 2007	IbxActivities2007@Skilbex.com



EXECUTIVE BOARD MEMBERS

President

Craig Moon (630) 579-8670

Trip Chairperson

Sarah Schmeichel (847) 496-7457

Assistant Pam Arnold

(847) 358-1504

Membership Chairperson

Doris Hoffie (847) 202-5676

Activities Chairperson

Mindy Parry (847) 309-0214

Secretary

Ed Fee (847) 496-7457

Treasurer

Lou DiFrancisco (847) 341-4583

Assistant Joe Davis

(847) 985-1699

When life bring changes...

Help us keep our records up to date.

When your information changes please fill out this form and bring it to a meeting, or mail your new information to:

lbexMembership2007@Skilbex.com

Name: _____

Street: _____

City, State, Zip: _____

Home Phone: _____

Work Phone: _____

Cell Phone: _____

2007-08 MEMBERSHIP RATES

	E-Mail	Paper
Single	\$ 20.00	\$ 35.00
Couple/Family	\$ 35.00	\$ 50.00

CHECK OUT THE IBEX WEBSITE!

WWW.SKILBEX.COM

E-MAIL: lbexMembership2007@Skilbex.com

The Washington Post's Mensa Invitational once again asked readers to take any word from the dictionary, alter it by adding, subtracting, or changing one letter, and supply a new definition. Here are this year's winners: Read them carefully. Each is an artificial word with only one letter altered to form a real word.

1. **Intaxication:** Euphoria at getting a tax refund, which lasts until you realize it was your money to start with.
2. **Reintarnation:** Coming back to life as a hillbilly.
3. **Bozone:** The substance surrounding stupid people that stops bright ideas from penetrating. The bozone layer shows little sign of breaking down in the near future.
4. **Cashtration:** The act of buying a house, which renders the subject financially impotent for an indefinite period.
5. **Giraffiti:** Vandalism spray-painted very, very high.
6. **Sarchasm:** The gulf between the author of sarcastic wit and the person who doesn't get it.
7. **Inoculatte:** To take coffee intravenously when you are running late.
8. **Hipatitis:** Terminal coolness.
9. **Osteopornosis:** A degenerate disease. (This one got extra credit.)
10. **Karmageddon:** It's like, when everybody is sending off all these really bad vibes, right? And then, like, the Earth explodes and it's like, a serious bummer.
11. **Decafalon:** The grueling event of getting through the day consuming only things that are good for you.
12. **Glibido:** All talk and no action.
13. **Dopeler effect:** The tendency of stupid ideas to seem smarter when they come at you rapidly.
14. **Arachnoleptic fit:** The frantic dance performed just after you've accidentally walked through a spider web.
15. **Beelzebug:** Satan in the form of a mosquito, that gets into your bedroom at three in the morning and cannot be cast out.
16. **Caterpallor:** The color you turn after finding half a worm in the fruit you're eating. ***And the pick of the lot!:
17. **Ignoranus:** A person who's both stupid and an a**hole.



PARTING SHOTS